

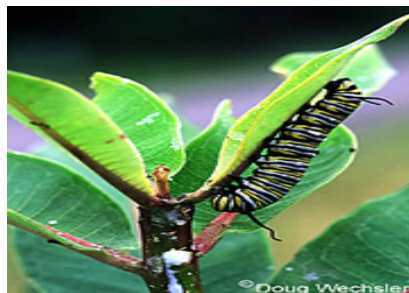
What is the L.O.T.S. Unit?

L.O.T.S was designed and implemented by The Court Social Services Division, under the leadership of Terri Odom in February 2006 to facilitate seamless supervision of all adolescent females involved in the front-end of the juvenile justice system. L.O.T.S supervision, provided by one probation officer of record throughout a female's involvement in the court builds on the Family Court's commitment to "One Judge, One Family." This revolutionary conceptual change reflects the division's new direction by providing early intervention and continuity in services to enhance the adolescent's female's chances to successfully transition into adulthood by using unique and therapeutic method under the concept of restorative justice.

The use of a strength-based approach is critical to addressing the needs of delinquent female youth. This approach will help to accelerate a positive transition and solution to delinquent behavior patterns.

This is achieved by:

- Eliciting the assistance of the family,
- Connecting youth and their family with positive, useful resources
- Fostering positive gender identity development.
- Creating positive experiential solutions that can build resiliency to risk factors and prevent delinquency through restorative justice.
- Give females a chance to see consistency among adults showing cooperation and respect for each other and showing good communication, with life skills emphasis.



Services Provided

- Family Group Conferencing
- Face to Face Curfew Monitoring
- Home Visits and Supervision Sessions
- School Visits and Supervisions Sessions
- Mentoring and Pro-Social Activities
- Tutoring and Educational Advocacy
- Individual and Family Therapy
- Anger Management
- Drug Testing and Education
- Summer Retreats
- Weekly Programming

Additional Services

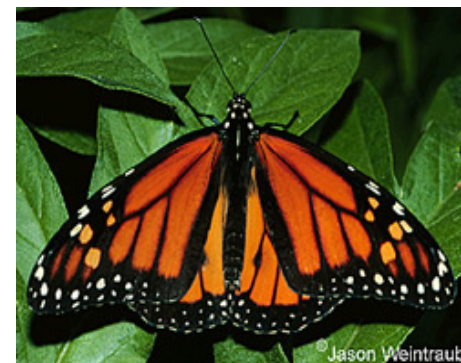
- The LOTS Unit additionally conducts home studies for the judiciary in Domestic Relations cases.

Weekly Program Components

- Health & Hygiene/Personal Care
- Image Building and Self-Esteem
- Pregnancy and Parenting Skills
- Domestic Violence and Date Rape
- Respect and Values
- Conflict Resolutions/Bullying
- Cultural Diversity
- Job Readiness
- Banking and Finance
- Etiquette and Social Networking.
- AIDS/Sexually Transmitted Diseases.

Partnerships With

- Child and Family Services Agency
- Office of the Attorney General
- The Defense Bar and the District of Columbia Public Defender Service
- Department of Mental Health
- District of Columbia Department of Youth Rehabilitation Services
- District of Columbia Public School System
- Metropolitan Police Department
- Community Based Providers
- Project POLARIS (Human Trafficking)



Leaders of Today in Solidarity Unit

Lawrence Weaver/LaJuan Woodland
Supervisory Probation Officers
(202) 636-2761 / (202) 636-2762

Sharamon Dupree **Deputy Clerk**
(202) 636-2763

Jermaine Arrington **Probation Officer**
(202) 636-2764

Shawn Westley **Probation Officer**
(202) 636-2773

Tiffany Hardy **Probation Officer**
(202) 636-2767

Aisha Jeffries **Probation Officer**
(202) 636-2769

Denise Tennant-Bryan **Probation Officer**
(202) 636-2771

Marsha Murray-Shillea **Probation Officer**
(202) 636-2768

Robert Smith **Probation Officer**
(202) 636-2770

Michael Carter **Probation Officer**
(202) 636-2765

Tau Carter **Probation Officer**
(202) 636-2772

DC SUPERIOR COURT

COURT SOCIAL SERVICES DIVISION

118 Q Street, NE
Washington, DC 20002

Fannie Barksdale, Deputy Director
Court Social Services Division
202-508-1751
fannie.barksdale@dcsc.gov

Terri Odom, Director
Court Social Services Division
(202) 508-1800
terri.odom@dcsc.gov

Hiram Puig-Lugo, Presiding Judge
DC Superior Court Family Court

Lee F. Satterfield, Chief Judge
District of Columbia Superior Court

L.O.T.S. Mission Statement

"To provide comprehensive services and supervision relative to the unique needs of female adolescents."



Leaders of Today in Solidarity

LOTS Unit

Family Court

Social Services Division

Region II

Pre and Post

Disposition Branch



118 Q St., NE
Washington DC 20002
Office: 202-636-2763
FAX: 202-636-2778