


Rev.	Date	Pages Changed	Initials
	-----	Submittal	-----

# DCC Moultrie - 500 Indiana Ave

Crofton, Maryland

As Prepared By

## Albireo Energy LLC

2134 Espey Court Suite # 9  
Crofton, Maryland 21114

Phone Number: (301) 858-0220

Fax Number: (301) 858-0286

**AUTOMATEDLOGIC<sup>®</sup>**  
C O R P O R A T I O N

Table of Contents

1: Titlepage

2: Table of Contents

3: Network Riser 1

4: Network Riser 2

5: Parking Level Network Wiring

6: C Level Network Wiring

7: JM Level Network Wiring

8: Indiana Level Network Wiring

9: 2nd Floor Network Wiring

10: 3rd Floor Network Wiring

11: 4th Floor Network Wiring

12: 5th Floor Network Wiring

13: 6th Floor Network Wiring

14: Penthouse Level Network Wiring

DC Courts -AHU

P Level Equipment

Count	Type	#
1	AHU	- 1
2	RF	- 1
3	AHU	- 5
4	RF	- 5
5	AHU	- 6
6	RF	- 6
7	AHU	- 28
8	RF	- 28
9	AHU	- 12
10	RF	- 12
11	AHU	- 11
12	RF	- 11
13	Chiller	- 1
14	Chiller	- 2
15	Pump	- 1
16	Pump	- 2
17	Pump	- 3
18	Pump	- 4
19	Pump	- 5
20	Pump	- 6
21	Pump	- 7

Count	Type	#
22	AHU	- 13
23	RF	- 13
24	AHU	- 14
25	RF	- 14
26	HVU	- 4
27	HVU	- 5
28	AHU	- 29
29	RF	- 29
30	AHU	- 21
31	RF	- 21
32	SF	- 1
33	EF	- 1

C Level Equipment

Count	Type	#
34	AHU	- 22
35	RF	- 22
36	AHU	- 10
37	RF	- 10
38	AHU	- 8
39	RF	- 8

Count	Type	#
40	AHU	- 9
41	RF	- 9
42	AHU	- 7
43	RF	- 7
44	AHU	- 20
45	RF	- 20
46	AHU	- 24
47	RF	- 24
48	AHU	- 31
49	AHU	- 32

JM Level Equipment

Count	Type	#
50	AHU	- 30
51	RF	- 30
52	AHU	- 25
53	AHU	- 26
54	AHU	- 27

East Penthouse Equipment

Count	Type	#
55	AHU	- 23
56	RF	- 23
57	AHU	- 18
58	RF	- 18
59	AHU	- 15
60	RF	- 15
61	AHU	- 17
62	RF	- 17
63	AHU	- 16
64	RF	- 16
65	CT	- All

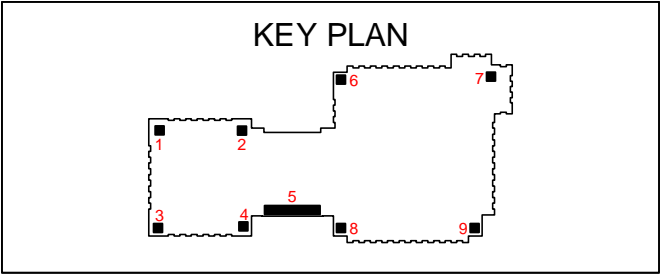
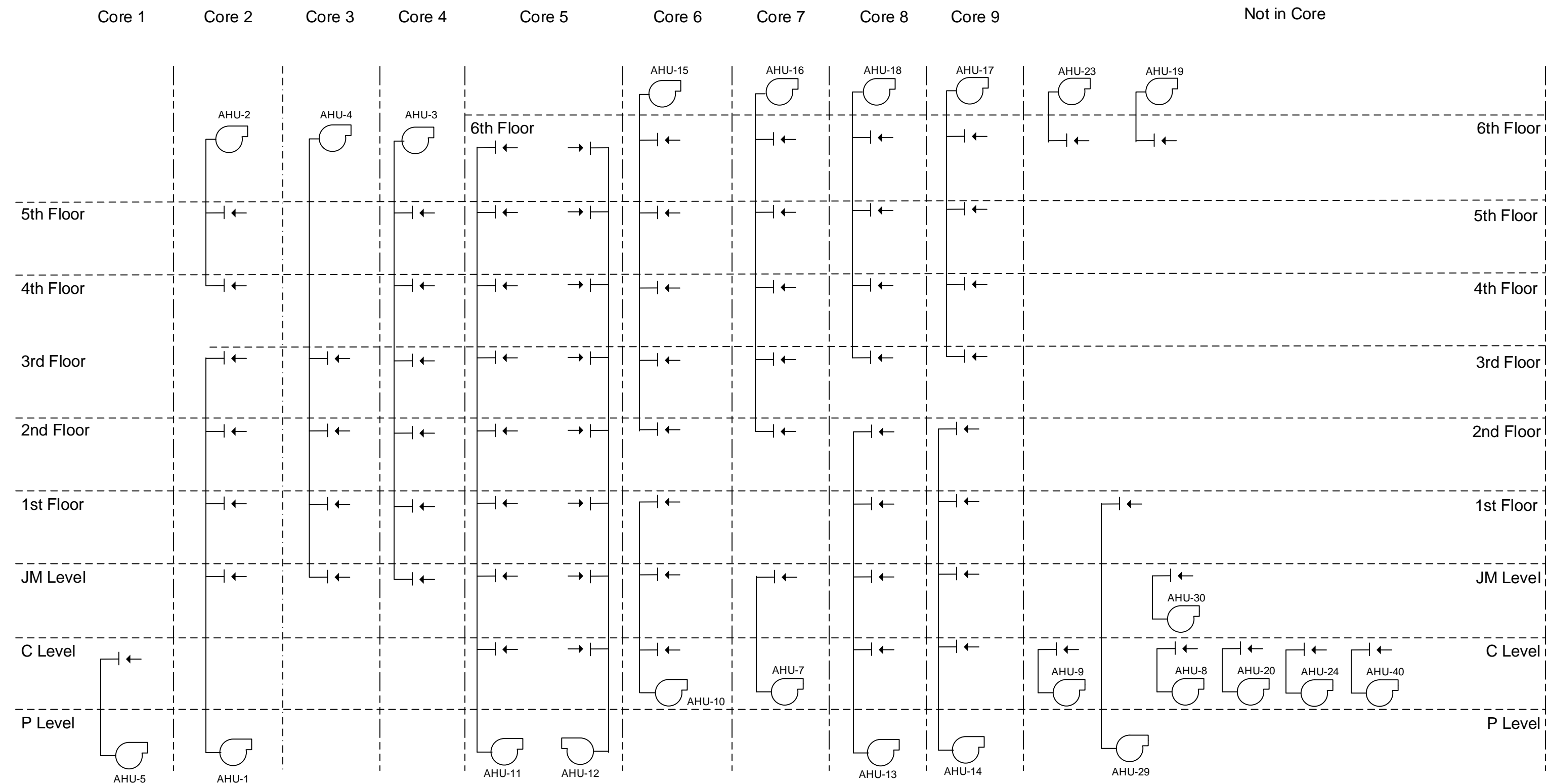
West Penthouse Equipment

Count	Type	#
66	AHU	- 2
67	RF	- 2
68	AHU	- 3
69	RF	- 3
70	AHU	- 4
71	RF	- 4
72	AHU	- 19
73	RF	- 19

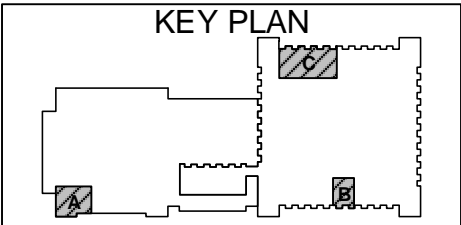
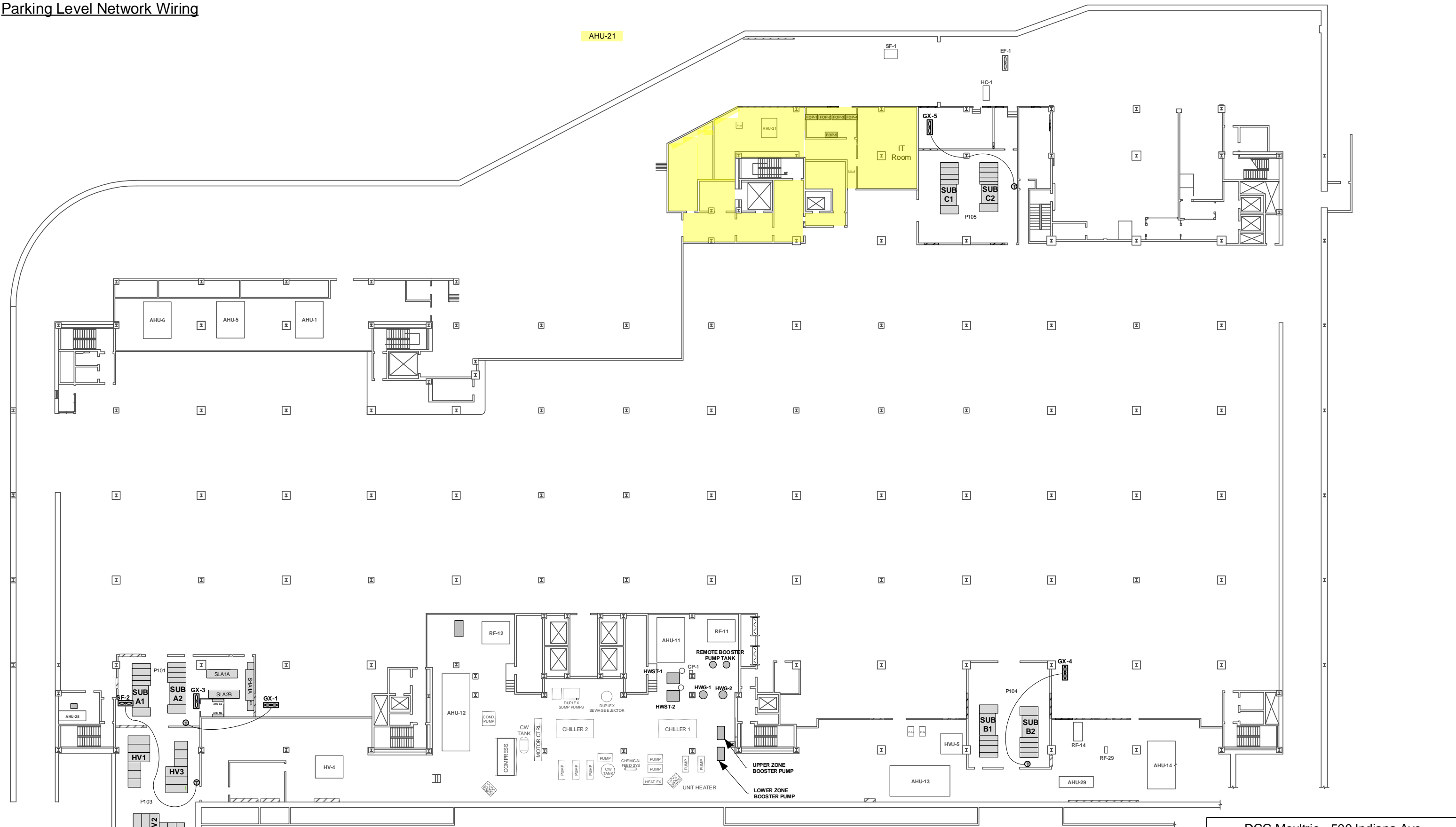
NOTES:

- 1-) The original AHU- 25, 26 and 27 were deleted during the juvenile holding area built out.
- 2-) Rename SCUJM-2 to AHU-25 (These are ceiling hung units juvenile holding areas)
- 3-) Rename BCU-JM1 to AHU-26 (These are ceiling hung units juvenile holding areas)
- 4-) Rename SCUJM-1 to AHU-27 (These are ceiling hung units juvenile holding areas)
- 5-) Rename BCU-C1 to AHU-31 (These are ceiling hung units juvenile holding areas)
- 6-) Rename AHU-C1 to AHU-30 (These are ceiling hung units juvenile holding areas)

AHU Riser Diagram




Parking Level Network Wiring

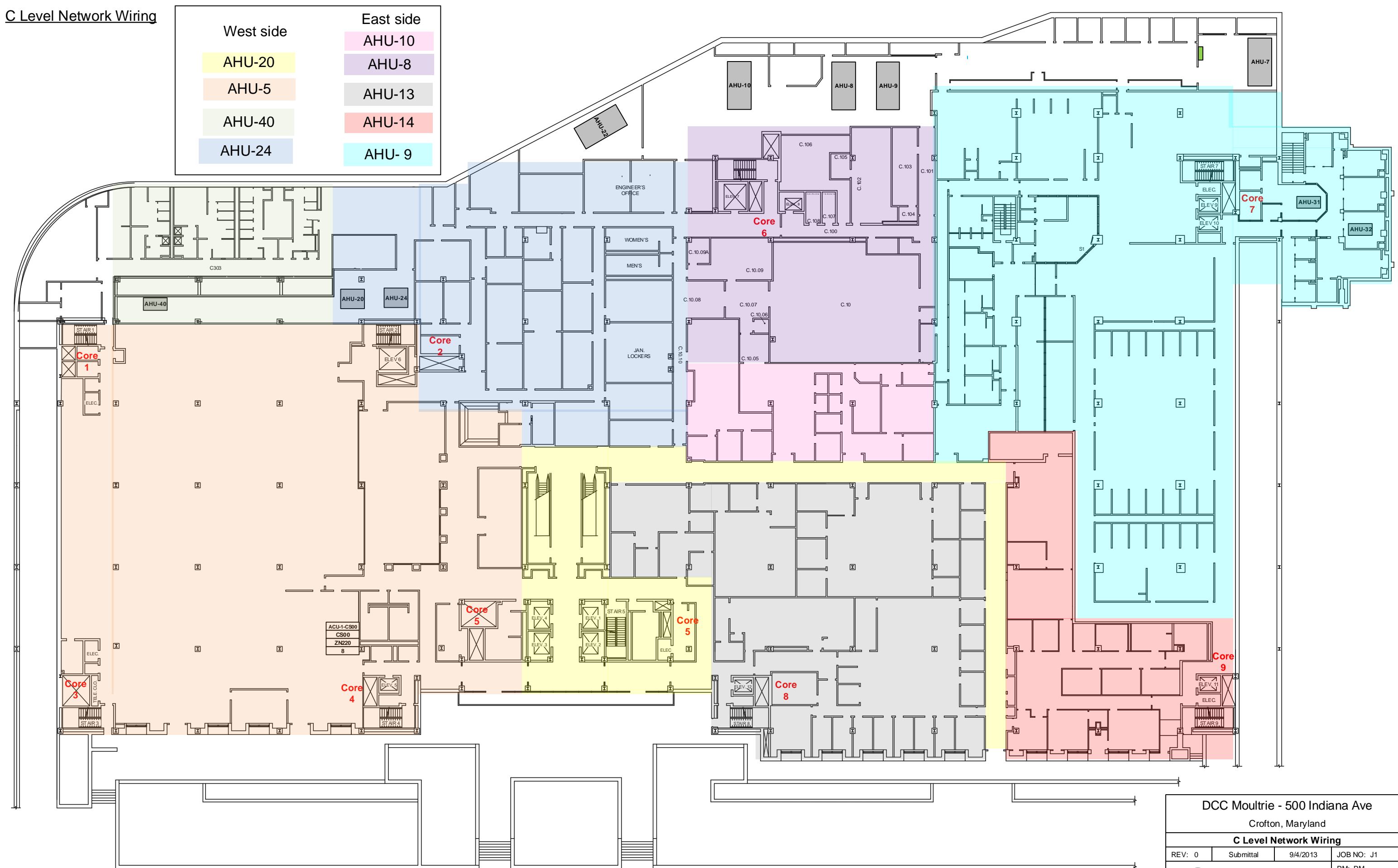
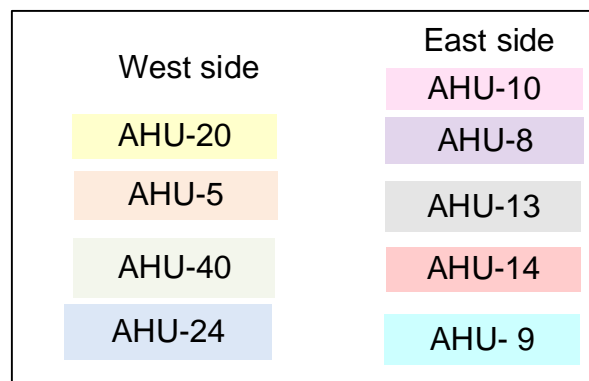


DCC Moultrie - 500 Indiana Ave  
Crofton, Maryland

**Parking Level Network Wiring**

REV: 0	Submittal	9/4/2013	JOB NO: J1
 E.M.S. Technologies Inc. 2134 Espey Court Suite # 9 Crofton, Maryland 21114			PM: PM Eng: Engineer
4 of 15			

## C Level Network Wiring



DCC Moultrie - 500 Indiana Ave

Crofton, Maryland

## C Level Network Wiring

REV: 0	Submittal	9/4/2013	JOB NO: J1
--------	-----------	----------	------------

PM: PM
--------

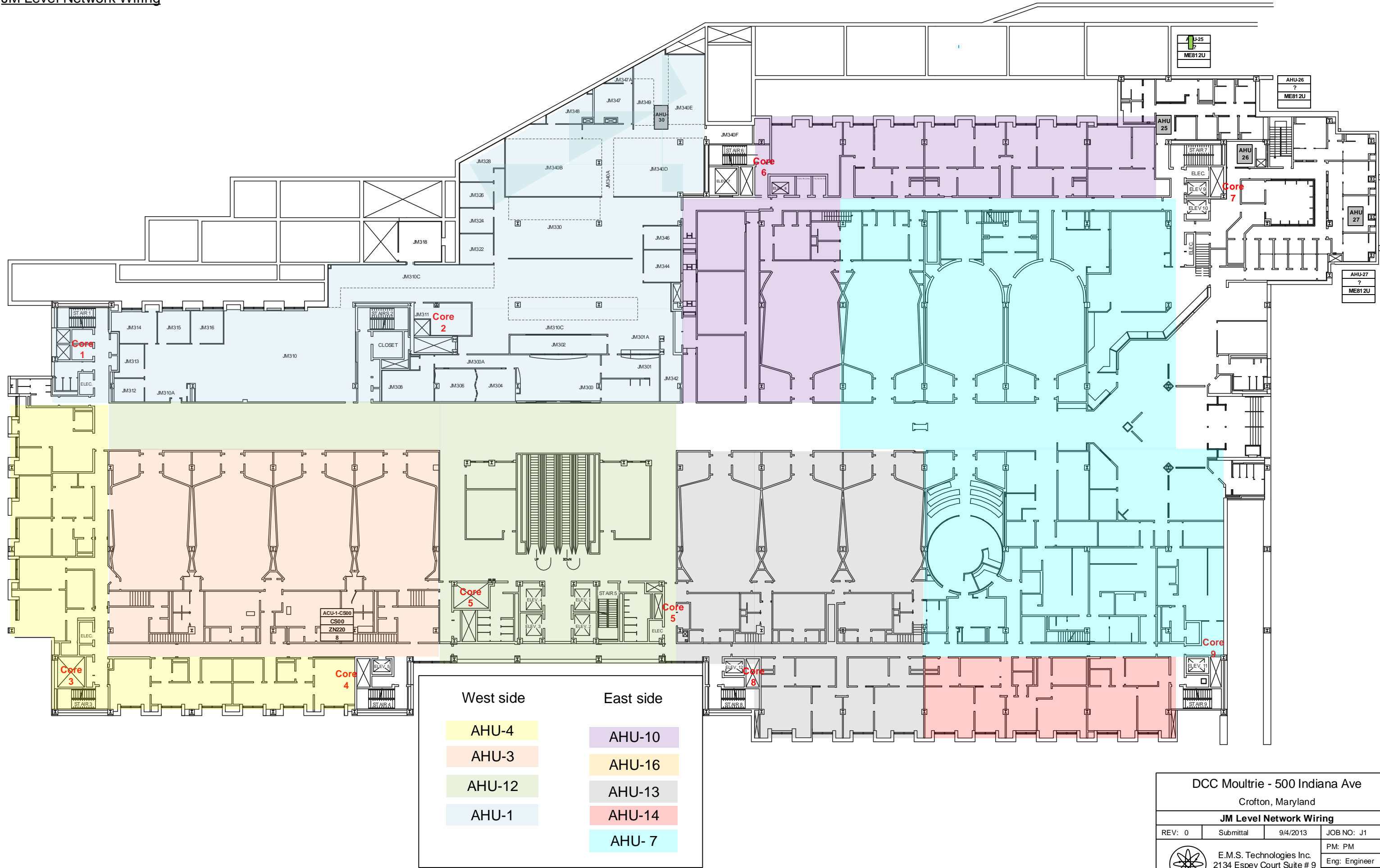


E.M.S. Technologies Inc.  
2134 Espey Court Suite # 9  
Crofton, Maryland 21114

PM: PM


Eng: Engineer

JM Level Network Wiring



DCC Moultrie - 500 Indiana Ave  
Crofton, Maryland

JM Level Network Wiring

REV: 0	Submittal	9/4/2013	JOB NO: J1
 E.M.S. Technologies Inc. 2134 Espey Court Suite # 9 Crofton, Maryland 21114			PM: PM Eng: Engineer

6 of 15

Indiana Level Network Wiring

West side

East side

AHU-4

AHU-10

AHU-3

AHU-13

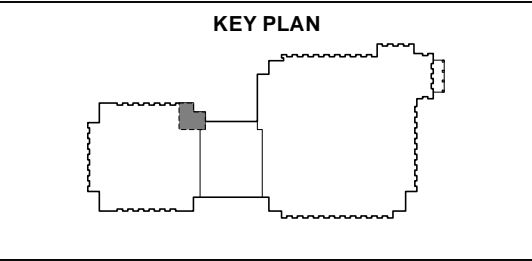
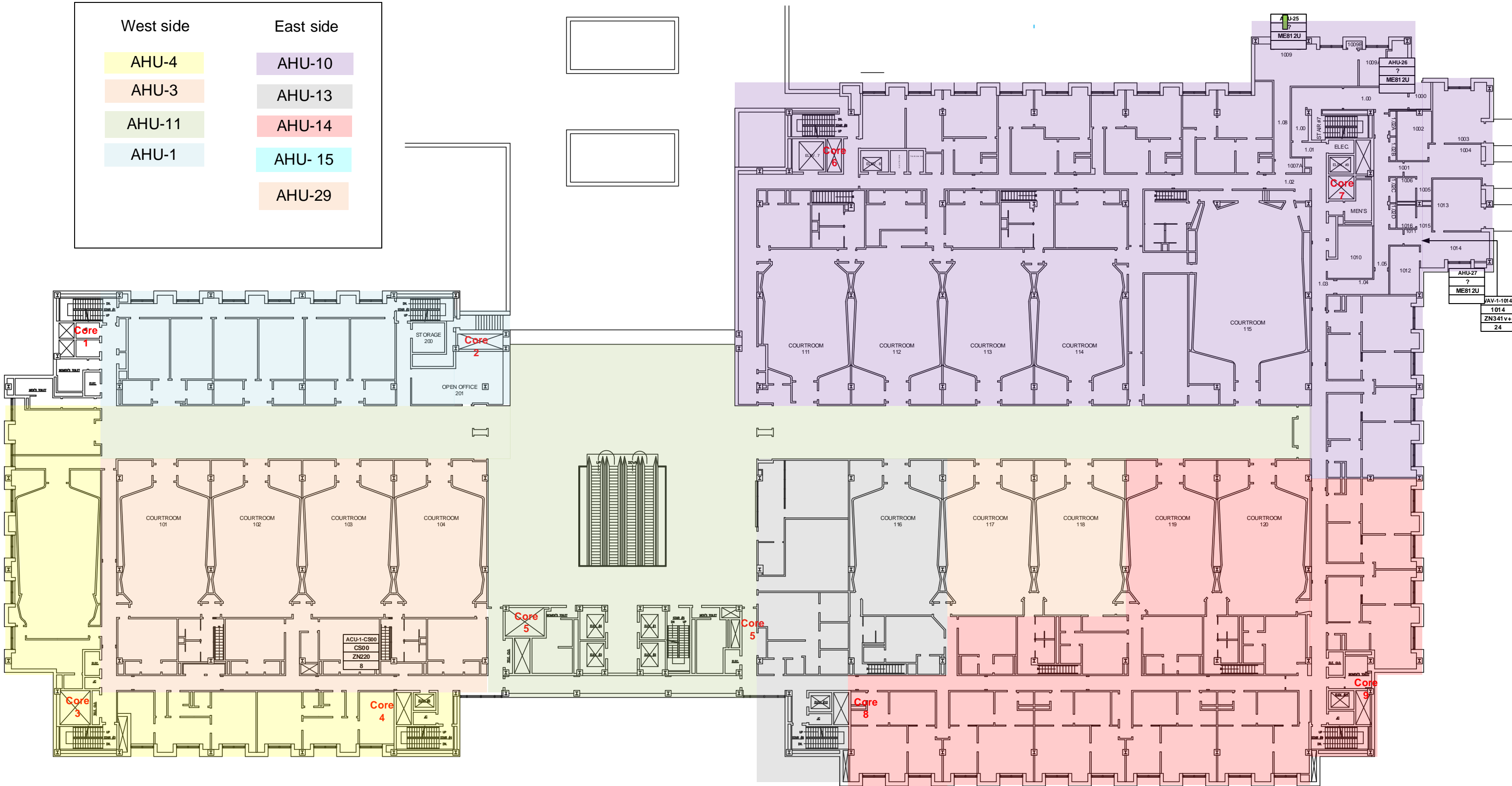
AHU-11


AHU-14

AHU-1

AHU-15

AHU-29



DCC Moultrie - 500 Indiana Ave			
Crofton, Maryland			
Indiana Level Network Wiring			
REV: 0	Submittal	9/4/2013	JOB NO: J1
 E.M.S. Technologies Inc. 2134 Espey Court Suite # 9 Crofton, Maryland 21114			PM: PM
			Eng: Engineer
7 of 15			

2nd Floor Network Wiring

West side

AHU-4

AHU-3

AHU-11

AHU-1

East side

AHU-30

AHU-16

AHU-13

AHU-14

AHU- 15



DCC Moultrie - 500 Indiana Ave

Crofton, Maryland


2nd Floor Network Wiring

REV: 0

Submittal

9/4/2013

JOB NO: J1



E.M.S. Technologies Inc.  
2134 Espey Court Suite # 9  
Crofton, Maryland 21114

PM: PM

Eng: Engineer

8 of 15



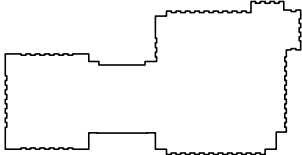
3rd Floor Network Wiring



4th Floor Network Wiring



KEY PLAN



NOTES:

① Sensor locations to be provided by consulting engineer.

DCC Moultrie - 500 Indiana Ave

Crofton, Maryland

4th Floor Network Wiring

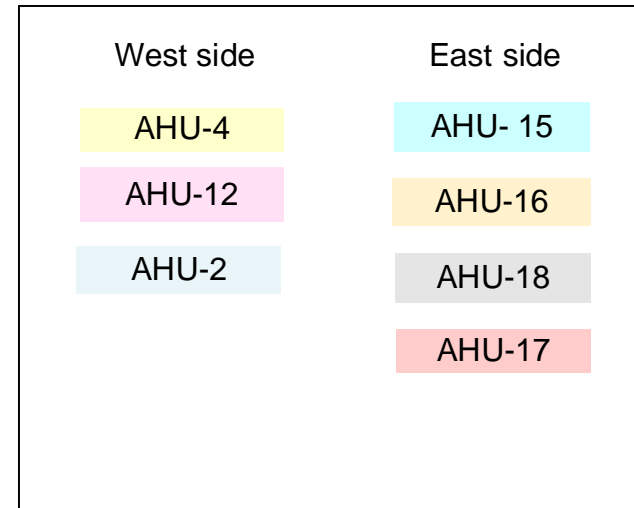
REV: 0    Submittal    9/4/2013    JOB NO: J1



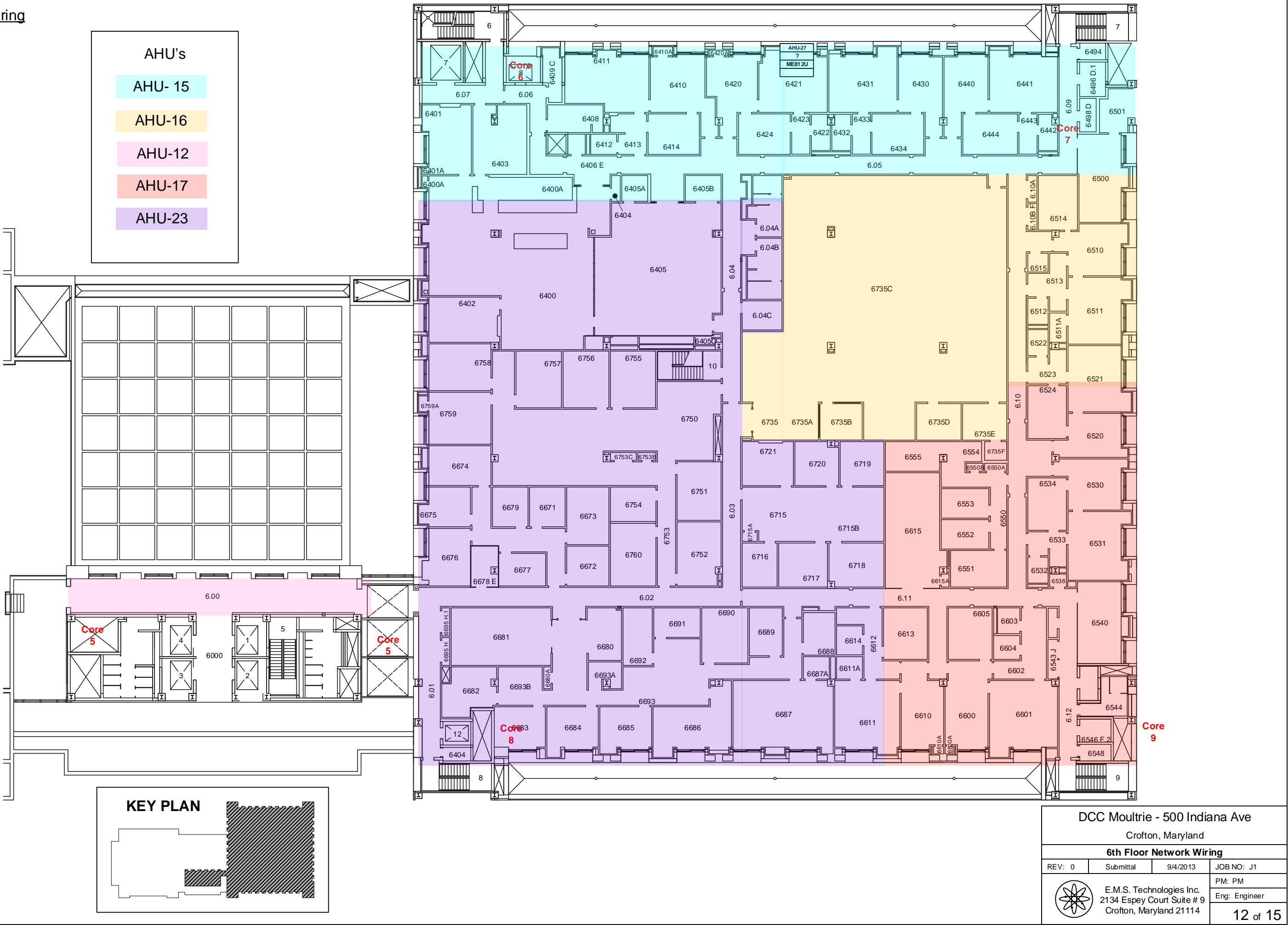
E.M.S. Technologies Inc.  
2134 Espey Court Suite # 9  
Crofton, Maryland 21114

PM: PM  
Eng: Engineer

## 5th Floor Network Wiring



6th Floor Network Wiring



DCC Moultrie - 500 Indiana Ave

Crofton, Maryland

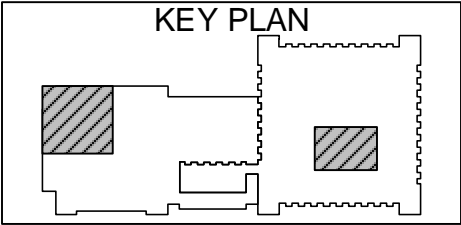
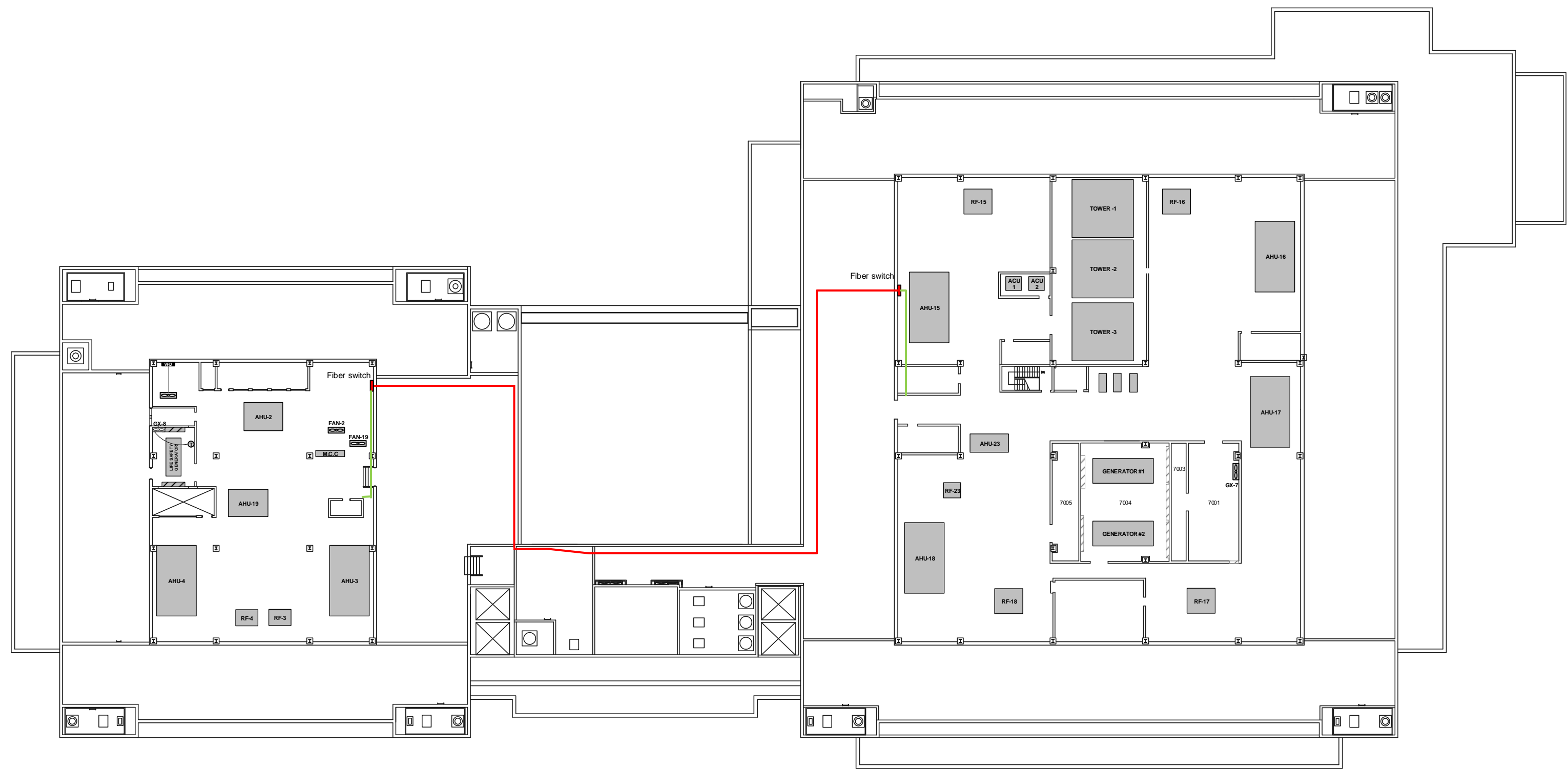
6th Floor Network Wiring


REV: 0    Submittal    9/4/2013    JOB NO: J1

E.M.S. Technologies Inc.  
2134 Espey Court Suite # 9  
Crofton, Maryland 21114

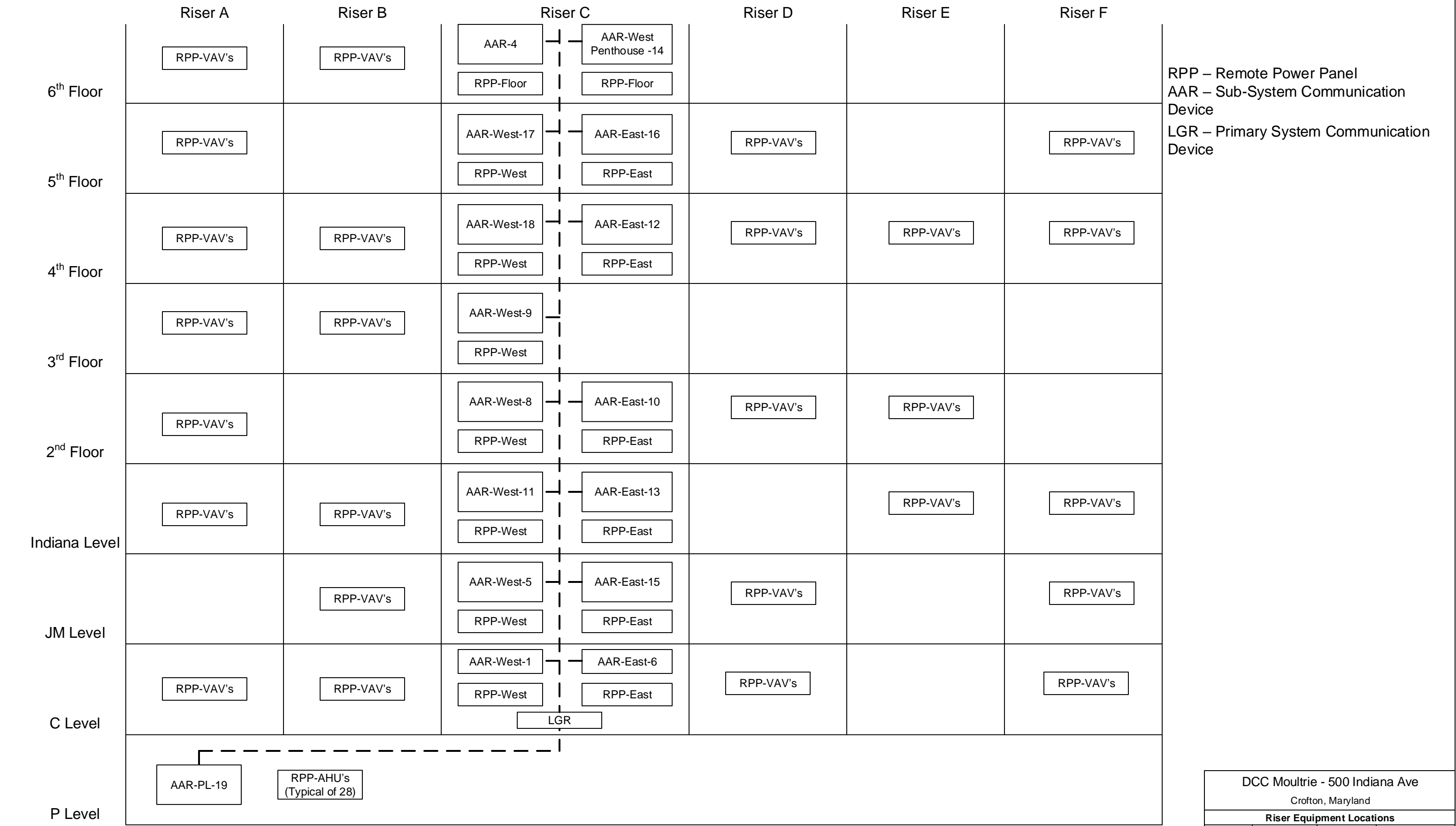
PM: PM  
Eng: Engineer

Penthouse Level Network Wiring



DCC Moultrie - 500 Indiana Ave			
Crofton, Maryland			
Penthouse Level Network Wiring			
REV: 0	Submittal	9/4/2013	JOB NO: J1
 E.M.S. Technologies Inc. 2134 Espey Court Suite # 9 Crofton, Maryland 21114			PM: PM
			Eng: Engineer
			13 of 15

Riser Equipment Locations



Roof

AAR-West  
Penthouse -14

LGR

LGR

AAR-East  
Penthouse -21

6<sup>th</sup> Floor

LGR

AAR-4

5<sup>th</sup> Floor

AAR-West-17

LGR

LGR

AAR-East-16

UNI-7

4<sup>th</sup> Floor

AAR-West-18

LGR

LGR

AAR-East-12

UNI-14

UNI-15

3<sup>rd</sup> Floor

AAR-West-9

LGR

LGR

AAR-East-new

UNI-2

UNI-3

UNI-6

2<sup>nd</sup> Floor

AAR-West-8

LGR

LGR

AAR-East-10

UNI-8

UNI-9

UNI-10

Indiana Level

AAR-West-11

LGR

LGR

AAR-East-13

UNI-12

UNI-5

JM Level

AAR-West-5

LGR

LGR

AAR-East-15

UNI-19

Fire Alarm JM-LL

UNI-18

UNI-23

C Level

AAR-West-1

LGR

LGR

AAR-PL-19  
Sub Station C

P Level

1

Require CSO to access

2

Riser has existing RPP

Fiber

CAT-5

Archnet

LGR – Primary System Communication Device

AAR – Sub-System Communication Device

DCC Moultrie - 500 Indiana Ave  
Crofton, Maryland

New Riser

REV: 0

Submittal

9/4/2013

JOB NO: J1



E.M.S. Technologies Inc.  
2134 Espey Court Suite # 9  
Crofton, Maryland 21114

PM: PM

Eng: Engineer

15 of 15