

District of Columbia Courts

Capital Projects and Facilities Management Division (CPFMD)



Pre-Bid Conference for Program Management (PgM) Services Solicitation

September 25, 2023



District of Columbia Courts

Capital Projects and Facilities Management Division (CPFMD)



Agenda

I. Overview

- Judiciary Square Campus
- Leased Spaces
- DC Courts/Capital Projects and Facilities Management Division (CPFMD) Organizational Structure

II. Stakeholder Engagement

III. Campus Wide Initiatives

IV. Current & Future Projects

- Current Projects (under Construction)
- Anticipated to commence in FY24
- Anticipated to commence in FY25

District of Columbia Courts

Capital Projects and Facilities Management Division (CPFMD)



Overview

Judiciary Square Campus

Building A (515 5th St.) - Appx 66k OSF

(Probate Division, Crime Victims Compensation)

Building B (510 4th St.) - Appx 68k OSF

(Landlord Tenant, Small Claims)

Building C (410 E St.) - Appx 29k OSF

(IT Division, Multi-Door ADR)

Building D – Court of Appeals

(430 E St.) - Appx 59k OSF

(Historic Courthouse)

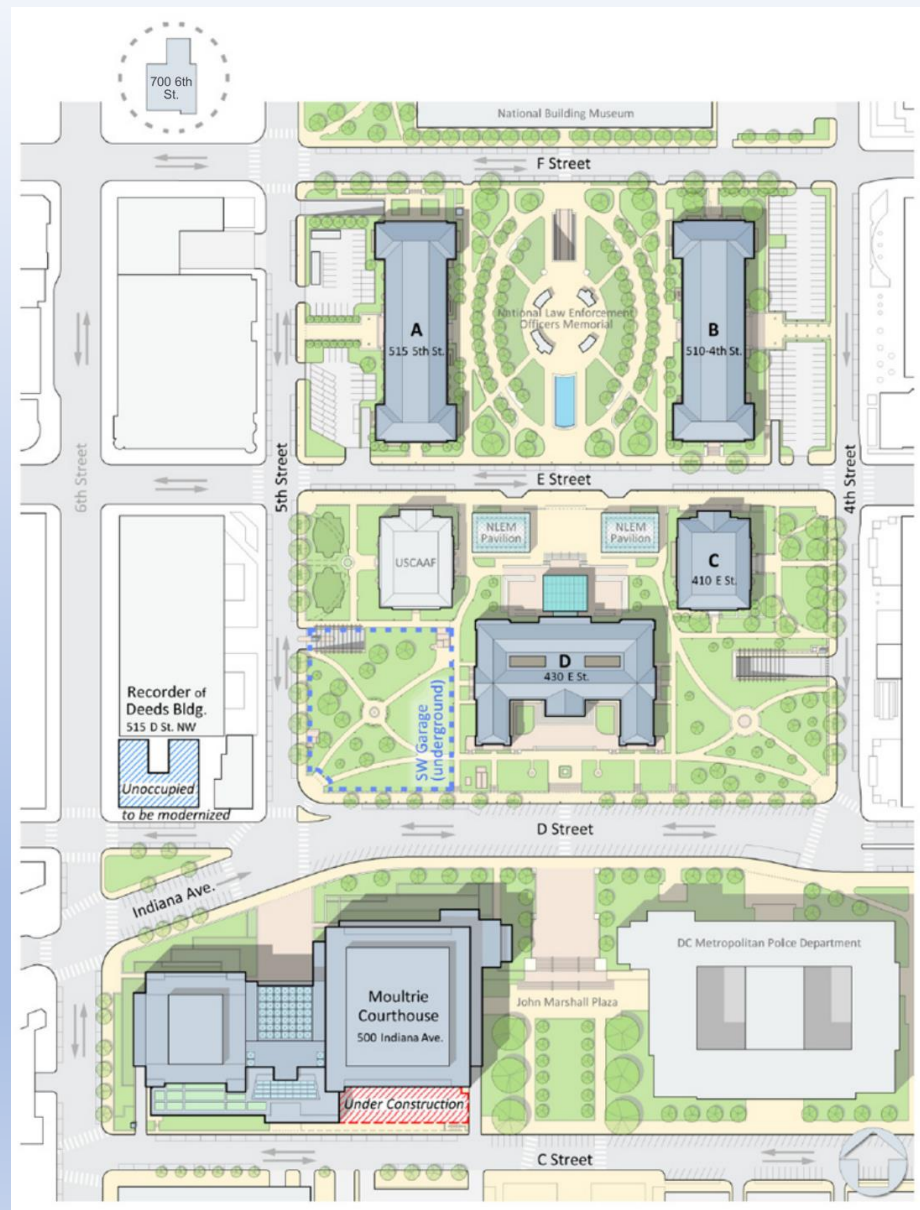
H. Carl Moultrie Court House

(500 Indiana Ave.) – Appx 463k OSF

(Civil, Criminal, Domestic Violence, Executive Office, Family Court, Court Social Services, Court Reporting, General Counsel, Special Operations, Human Resources, Strategic Management, Center for Education and Training Judicial Chambers)

Recorder of Deeds (515 D St.) - Appx 44k GSF

(Vacant - TBD)



District of Columbia Courts

Capital Projects and Facilities Management Division (CPFMD)



Overview

Leased Spaces

700 6th Street

(700 6th St. NW) – 12th Floor

(Administrative Services, Budget & Finance, Capital Projects and Facilities Management)

Balanced and Restorative Justice (BARJ) Locations (6)

(Various Locations in DC) – Appx 50k OSF total

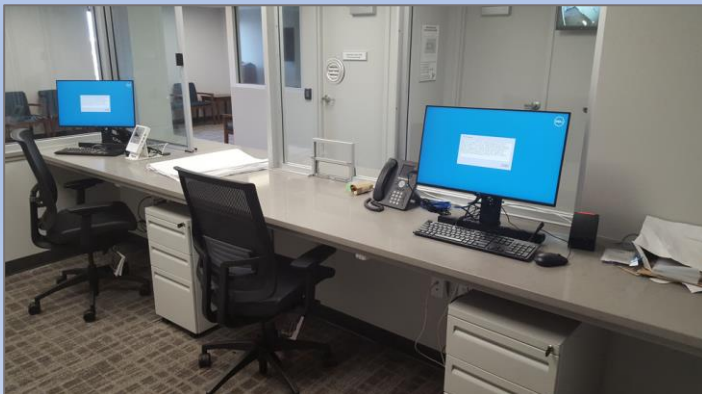
(Mix of administrative program and recreational spaces for youth)

Domestic Violence Satellite Office

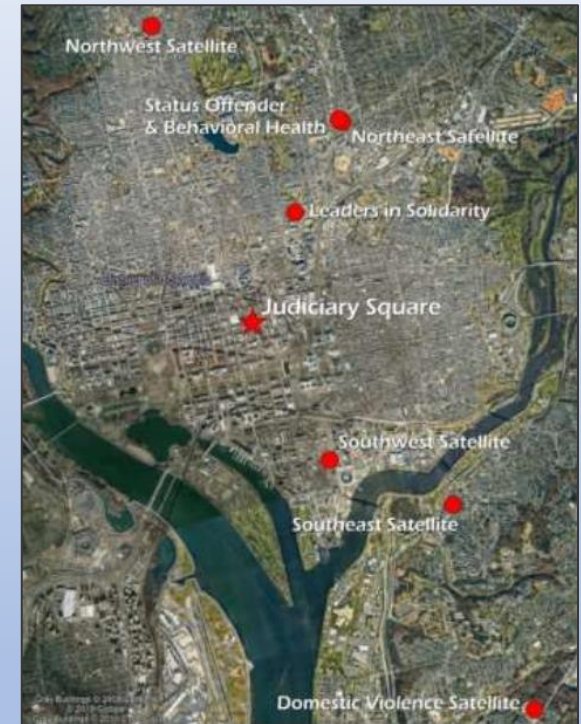
(Southeast, DC) – Appx 4,400 SF

Storage Warehouse

(Cheverly, MD)

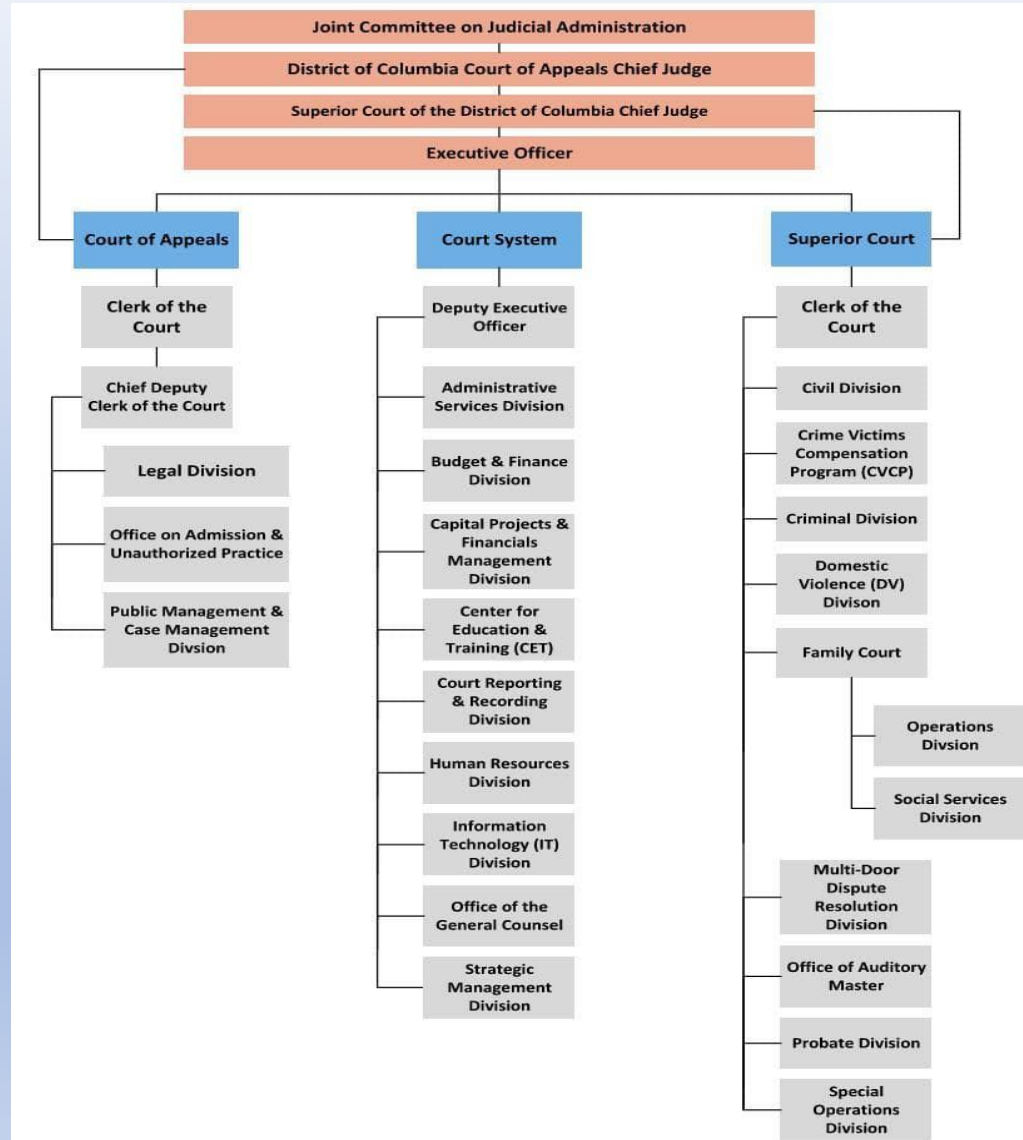


Southeast BARJ Satellite



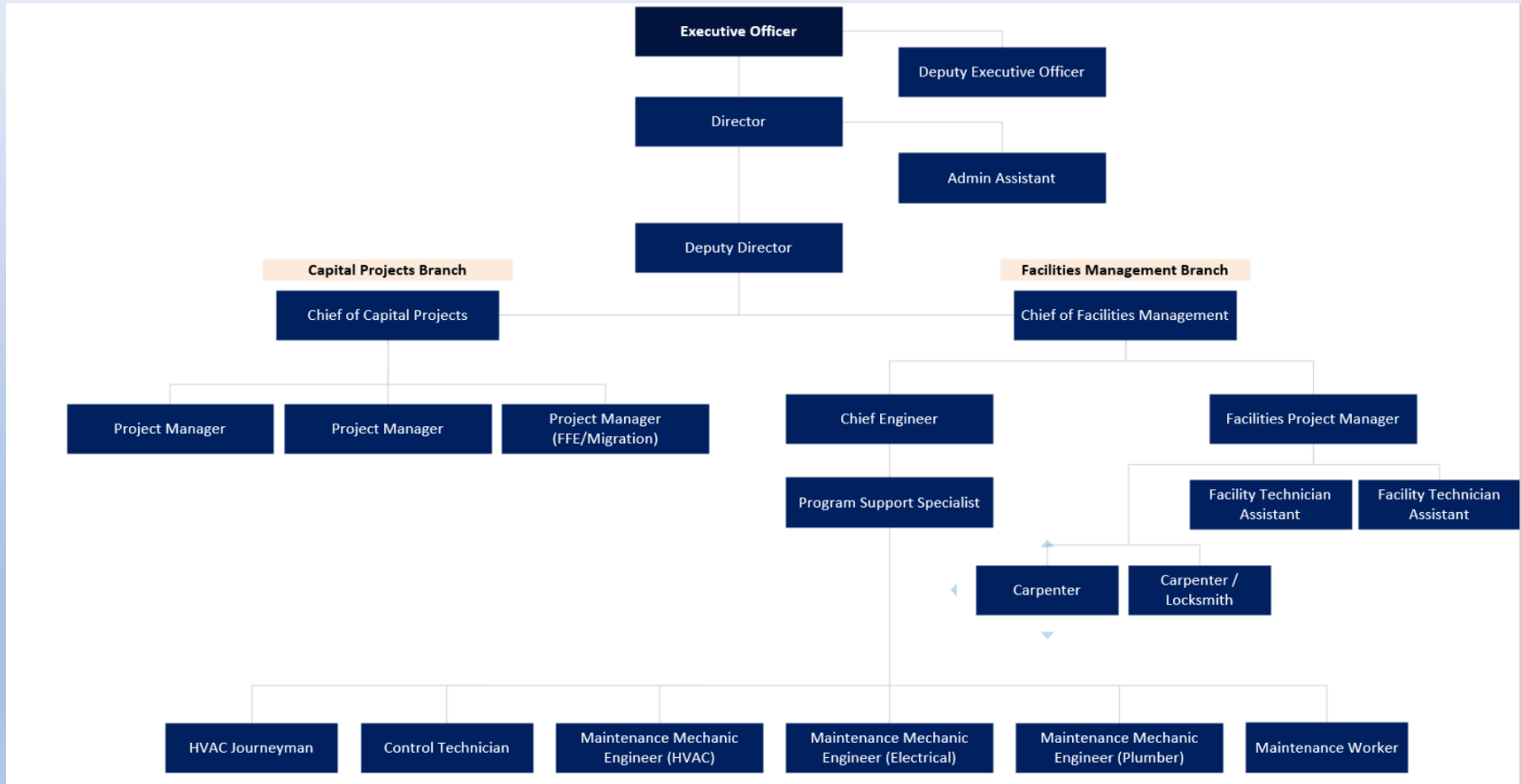


DC Courts Organizational Structure





Capital Projects and Facilities Management Division (CPFMD) Organizational Structure





Stakeholder Engagement

- **DC Courts**

- Judges & Judicial Staff (**63** Associate Judges, **26** Magistrate Judges, **39** Senior Judges, **2** Chief Judges)
- Courts Staff (Court Systems, Superior Court, Court of Appeals)
- Executive Office
- US Marshal Services (USMS)
- Outside Partner Agencies
- Law Enforcement Officers Memorial
- Landlords of leased spaces

- **CPFMD Support Services Contracts**

- Construction Management Services (CMa)
- Quality Assurance Services
- Architectural, Engineering, and Planning (AEP)
- Commissioning Agent
- Furniture Vendor
- Signage Vendor
- Third Party Inspection Services
- Materials Testing
- Consultants (Budget Planning, Furniture, Electrical SME, Risk Analysis)



Campus Wide Initiatives

Facilities Master Plan

- 2002 Original Masterplan
- 2009 – First Update to the Masterplan
- 2013 – Second Update to the Masterplan
- 2019 – Third Update to the Masterplan

Design Standards

- 2019 – DC Courts Design Standards
- 2023 – Furniture Standards Update currently in progress

Facilities Condition Assessment

- 2019 – Facility Condition Assessment of Moultrie, Court of Appeals, and Buildings A-C
- 2023 – Recorder of Deeds currently in progress



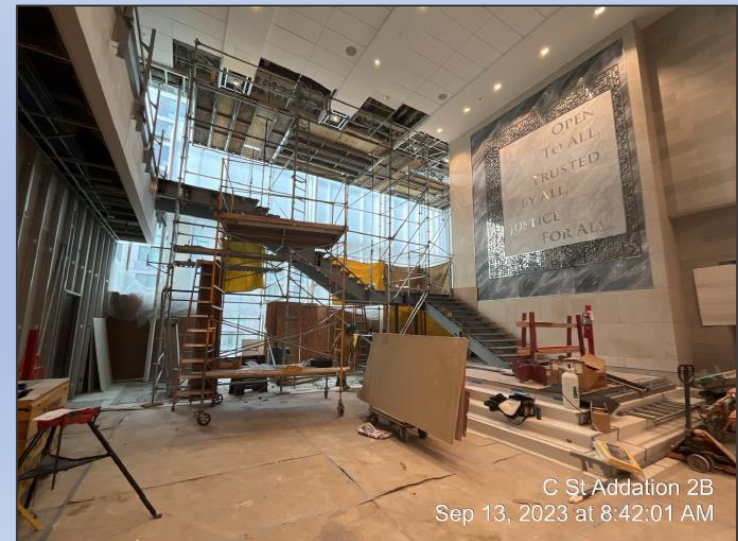
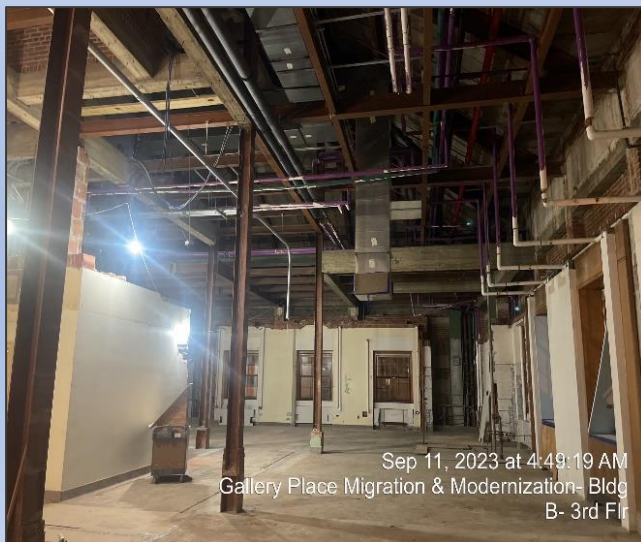
District of Columbia Courts

Capital Projects and Facilities Management Division (CPFMD)



Current Projects (Under Construction)

- C Street Addition
- 4th Floor Jurors Lounge and Training Rooms
- 4th Floor East Magistrate Judge's Chambers
- Migration from Gallery Place (MGP)
- Recorder of Deeds Modernization
- Chilled Water Upgrade
- C-185 HVAC Repair
- Commission on Judicial Disabilities and Tenure (CJDT)





Future Projects

Anticipated in FY24

- Historic Recorder of Deeds Modernization (Design/Construction)
- Courtroom Sets and Judicial Chambers
- Maintain Existing Infrastructure
- Life Safety & Code Compliance

Anticipated in FY25

- Historic Recorder of Deeds Modernization (Design/Construction)
- Maintain Existing Infrastructure



Questions?