

C-185**Room Detail**

Furniture Package

Room Number: C185A		Set Code: unique	Department:	
Room Name: Reception/Waiting		Room Type:	Building:	
		Cing. Ht.:	Location:	
		Dims:	Phase:	
Contents:		Manufacturer	Product	Quantity
Files & Shelving				
C-205	Storage Cabinet - 42"w Undercounter	Haworth	X-Series	1
Components and Panels				
H	Workstation - H	Haworth	Places	3
Seating				
G-1131	Task Chair - F, G & H Stations	Haworth	Zody	3
G-1311	Guest Chair - Reception	Haworth	Composites	8
Tables				
E-404	Occasional Table - Reception (Round)	Krug	Millennium Series	1
Room Total				16
Room Number: C185B		Set Code: unique	Department:	
Room Name: Office		Room Type:	Building:	
		Cing. Ht.:	Location:	
		Dims:	Phase:	
Contents:		Manufacturer	Product	Quantity
Files & Shelving				
F-5-36	Lateral File - 5 Drawer, 36"w	Haworth	X - Series	1
Components and Panels				
E	Workstation - E	Haworth	Places	1
Seating				
G-1134	Task Chair - D & E Stations	Haworth	Zody	1
G-1302	Guest Chair - D & E Stations	Haworth	Composites	1
Room Total				4
Room Number: C185C		Set Code: unique	Department:	
Room Name: Office		Room Type:	Building:	
		Cing. Ht.:	Location:	
		Dims:	Phase:	
Contents:		Manufacturer	Product	Quantity
Components and Panels				
G	Workstation - G	Haworth	Places	1
Seating				
G-1131	Task Chair - F, G & H Stations	Haworth	Zody	1
G-1301	Guest Chair - F & G Stations	Haworth	Zody	1
Room Total				3

Vendor is responsible for verifying product & item code; options, finishes, compatibility & quantities on specifications prior to placing orders, and re-verifying prior to installation.

C-185**Room Detail**

Furniture Package

Room Number: C185D	Set Code: unique	Department:		
Room Name: Open Office	Room Type:	Building:		
	Cing. Ht.:	Location:		
	Dims:	Phase:		
Contents:	Manufacturer	Product	Quantity	
Files & Shelving				
C-323	Metal Shelving - 18" Deep, 36"w	Iron Bound metal Products	Utility Shelving	4
C-333	Metal Shelving - 24" Deep, 36"w	Iron Bound metal Products	Utility Shelving	3
C-402	Wardrobe - 36"w Coat Rod	Haworth	X-Series	3
F-2-36	Lateral File - 2 Drawer, 36"w	Haworth	X-Series	1
Components and Panels				
H	Workstation - H	Haworth	Places	16
Seating				
G-1131	Task Chair - F, G & H Stations	Haworth	Zody	16
Room Total				43

Vendor is responsible for verifying product & item code; options, finishes, compatibility & quantities on specifications prior to placing orders, and re-verifying prior to installation.

Components and Panels

Item Code: E

Name: Workstation - E

Manufacturer: Haworth

Product Name: Places

Product Number: See Contract Drawings for Enlarged Plans & Details

Description: To Include:
Qty. 1 - Workrite Advantage Dual System 2112-22 Preconfigured
Keyboard tray w/ Memory Foam Palm Support
Qty. 2 - Ciglio LED 35" Task Lights CIG-P-N-35-S
Modifications are noted in CD Pkg.
Position: Section Chief; Grade 12-13

Finish / Color: Panel Fabric: Ritz, Classy PV-CL; Tackboard: Shimmer, Glass WS-11; PVC Trim: Putty TR-AA; Painted Finish: Gray Tone TR-G; Wood Finish: Heritage Cherry VC-W30; Task Light: Sterling Silver

Dimensions: 8.5' x 9' (100 Sq. Ft. +/- Close Office)

Weight:

Construction: Panel Supported Systems furniture

Installation: Panels, Demountables, Gyp. Board.



Image shown may differ from actual product appearance depending on specified configuration.

GSA Furn.Code

Contract #

Expires:

Notes:

Finish / Veneer: Wood Top Cap

Manufacturer: Haworth

Construction:

Content:

Backing:

Product: Heritage Cherry

Number:

Color: Heritage Cherry VC-W30

Width:

Repeat:

Weight:



Vendor is responsible for verifying product & item code; options, finishes, compatibility & quantities on specifications prior to placing orders, and re-verifying prior to installation.

Components and Panels

Item Code: E

Upholstery: Workstation Panel

Manufacturer: Haworth

Construction:

Content:

Backing:

Product: Surface Collection

Number: Ritz

Color: Classy PV-CL

Width:

Repeat:

Weight:



Finish / Veneer: Workstation P-Lam

Manufacturer: Haworth

Construction:

Content:

Backing:

Product: Surface Collection

Number: H-AA

Color: Putty

Width:

Repeat:

Weight:



Finish / Veneer: Workstation P-Lam - Vertical

Manufacturer: Haworth

Construction:

Content:

Backing:

Product: Surface Collection

Number: TR-AA

Color: Putty

Width:

Repeat:

Weight:



Upholstery: Workstation Tackboard

Manufacturer: Haworth

Construction:

Content:

Backing:

Product: Surface Collection

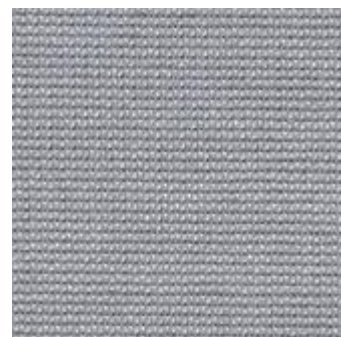
Number: Shimmer

Color: Glass WS-11

Width:

Repeat:

Weight:



Vendor is responsible for verifying product & item code; options, finishes, compatibility & quantities on specifications prior to placing orders, and re-verifying prior to installation.

C-185

Furniture Package

Specification - Items**Components and Panels**

Item Code: E

Location	Room #	Name	Quantity
	C185B	Office	1
		Total Quantity	<u>1</u>

Vendor is responsible for verifying product & item code; options, finishes, compatibility & quantities on specifications prior to placing orders, and re-verifying prior to installation.

C-185

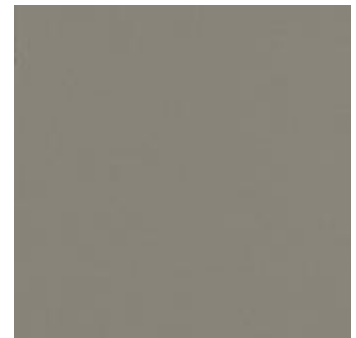
Furniture Package

Specification - Items**Files & Shelving**

Item Code: C-205

Name: Storage Cabinet - 42"w Undercounter**Manufacturer:** Haworth**Product Name:** X-Series**Product Number:** JSPY-0242-SJ**Description:** 1 shelf unit
locking, keyed alike to workstation**Finish / Color:** TR-G Gray tone**Dimensions:** 42"w x 18.75"d x 27.5"h**Weight:****Construction:** Steel

Image shown may differ from actual product appearance depending on specified configuration.

GSA Furn.Code**Contract #****Expires:****Notes:****Finish / Veneer:** Gray Tone**Manufacturer:** Haworth**Construction:****Content:****Backing:****Product:** Surface Collection**Number:** TR-G**Color:** Gray Tone**Width:****Repeat:****Weight:**

Location	Room #	Name	Quantity
	C185A	Reception/Waiting	1
		Total Quantity	1

Vendor is responsible for verifying product & item code; options, finishes, compatibility & quantities on specifications prior to placing orders, and re-verifying prior to installation.

C-185

Furniture Package

Specification - Items**Files & Shelving**

Item Code: C-323

Name: Metal Shelving - 18" Deep, 36"w
Manufacturer: Iron Bound metal Products
Product Name: Utility Shelving
Product Number: BN751836
Description: Heavy Duty Shelving Units
Nut and Bolt Style w, Sway Braces
Six Openings

Finish / Color: BL - Black
Dimensions: 36"w x 18"d x 75"h
Weight:
Construction: Steel

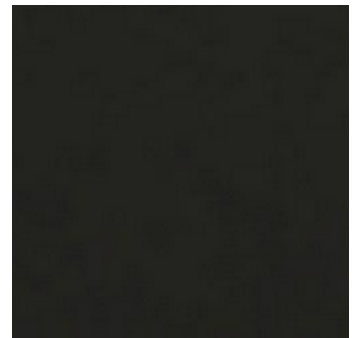


Image shown may differ from actual product appearance depending on specified configuration.

GSA Furn.Code**Contract #****Expires:****Notes:**

Paint: Black
Manufacturer:
Construction:
Content:
Backing:

Product: Powder Coat Finish
Number: Powder Coat Finish
Color: Black
Width:
Repeat:
Weight:



Location	Room #	Name	Quantity
	C185D	Open Office	4
		Total Quantity	4

Vendor is responsible for verifying product & item code; options, finishes, compatibility & quantities on specifications prior to placing orders, and re-verifying prior to installation.

C-185

Furniture Package

Specification - Items**Files & Shelving**

Item Code: C-333

Name: Metal Shelving - 24" Deep, 36"w
Manufacturer: Iron Bound metal Products
Product Name: Utility Shelving
Product Number: BN752436
Description: Heavy Duty Shelving Units
Nut and Bolt Style w, Sway Braces
Six Openings

Finish / Color: BL - Black
Dimensions: 36"w x 24"d x 75"h
Weight:
Construction: Steel

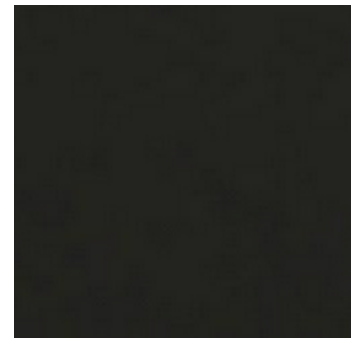


Image shown may differ from actual product appearance depending on specified configuration.

GSA Furn.Code**Contract #****Expires:****Notes:**

Paint: Black
Manufacturer:
Construction:
Content:
Backing:

Product: Powder Coat Finish
Number: Powder Coat Finish
Color: Black
Width:
Repeat:
Weight:



Location	Room #	Name	Quantity
	C185D	Open Office	3
		Total Quantity	3

Vendor is responsible for verifying product & item code; options, finishes, compatibility & quantities on specifications prior to placing orders, and re-verifying prior to installation.

C-185

Furniture Package

Specification - Items**Files & Shelving**

Item Code: C-402

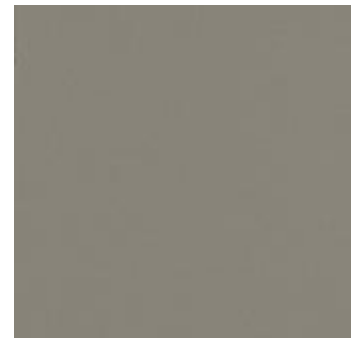
Name: Wardrobe - 36"w Coat Rod
Manufacturer: Haworth
Product Name: X-Series
Product Number: JWPC-0536-SJ
Description: Wardrobe Cabinet
w/ Coat rod
Shelf
w/ Lock
Finish / Color: TR-G Gray tone
Dimensions: 36"w x 18.75"d x 63.5"h
Weight:
Construction: Steel



Image shown may differ from actual product appearance depending on specified configuration.

GSA Furn.Code**Contract #****Expires:****Notes:**

Finish / Veneer:	Workstation - Trim / Paint	Product:	Surface Collection
Manufacturer:	Haworth	Number:	TR-G
Construction:		Color:	Gray Tone
Content:		Width:	
Backing:		Repeat:	
		Weight:	



Location	Room #	Name	Quantity
	C185D	Open Office	3
		Total Quantity	3

Vendor is responsible for verifying product & item code; options, finishes, compatibility & quantities on specifications prior to placing orders, and re-verifying prior to installation.

C-185

Furniture Package

Specification - Items**Tables**

Item Code: E-404**Name:** Occasional Table - Reception (Round)**Manufacturer:** Krug**Product Name:** Millennium Series**Product Number:** 6800-24D-21**Description:** Round Table
Seville Edge Detail**Finish / Color:** Regular Walnut**Dimensions:** 24" Dia. x 21"h**Weight:** 27 lbs.**Construction:** FSC Wood

6800-24Dia

D 24 H 21

Image shown may differ from actual product appearance depending on specified configuration.

GSA Furn.Code**Contract #****Expires:****Notes:****Finish / Veneer:** Stain - Krug**Manufacturer:** Krug**Construction:****Content:****Backing:****Product:** Regular Walnut**Number:** Regular Walnut**Color:** Regular Walnut**Width:****Repeat:****Weight:**

Location	Room #	Name	Quantity
	C185A	Reception/Waiting	1
		Total Quantity	1

Vendor is responsible for verifying product & item code; options, finishes, compatibility & quantities on specifications prior to placing orders, and re-verifying prior to installation.

C-185

Furniture Package

Specification - Items**Files & Shelving**

Item Code: F-2-36

Name: Lateral File - 2 Drawer, 36"w
Manufacturer: Haworth
Product Name: X -Series
Product Number: JLRD-0236-S
Description: X - Series Lateral File
2 Drawer
Integral Pull

Finish / Color: Grey Tone TR-G
Dimensions: 36"w x 18"d x 27.5"h
Weight:
Construction: Metal

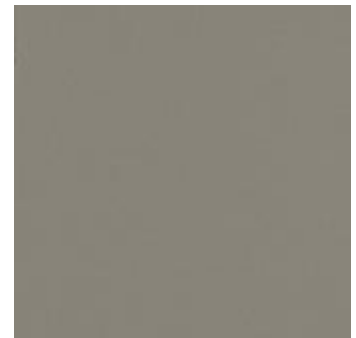


Image shown may differ from actual product appearance depending on specified configuration.

GSA Furn.Code**Contract #****Expires:****Notes:**

Finish / Veneer: Workstation - Trim / Paint
Manufacturer: Haworth
Construction:
Content:
Backing:

Product: Surface Collection
Number: TR-G
Color: Gray Tone
Width:
Repeat:
Weight:



Location	Room #	Name	Quantity
	C185D	Open Office	1
		Total Quantity	1

Vendor is responsible for verifying product & item code; options, finishes, compatibility & quantities on specifications prior to placing orders, and re-verifying prior to installation.

C-185

Furniture Package

Specification - Items**Files & Shelving**

Item Code: F-5-36

Name: Lateral File - 5 Drawer, 36"w
Manufacturer: Haworth
Product Name: X - Series
Product Number: JLRD-0536-S
Description: X - Series Lateral File
5 Drawer
Integral Pull

Finish / Color: Grey Tone TR-G
Dimensions: 36"w x 18"d x 63.5"h
Weight:
Construction: Metal

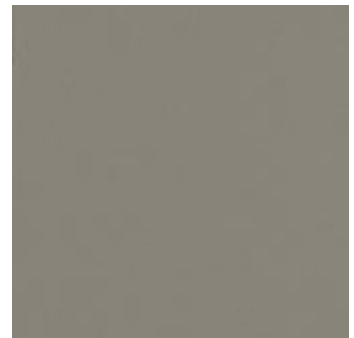


Image shown may differ from actual product appearance depending on specified configuration.

GSA Furn.Code**Contract #****Expires:****Notes:**

Finish / Veneer: Workstation - Trim / Paint
Manufacturer: Haworth
Construction:
Content:
Backing:

Product: Surface Collection
Number: TR-G
Color: Gray Tone
Width:
Repeat:
Weight:



Location	Room #	Name	Quantity
	C185B	Office	1
		Total Quantity	1

Vendor is responsible for verifying product & item code; options, finishes, compatibility & quantities on specifications prior to placing orders, and re-verifying prior to installation.

Components and Panels

Item Code: G

Name: Workstation - G

Manufacturer: Haworth

Product Name: Places

Product Number: See Contract Drawings for Enlarged Plans & Details

Description: To Include:
Optional Workrite Advantage Dual System 2112-22 Preconfigured
Keyboard tray w/ Memory Foam Palm Support
Qty. 1 - Astra LED Desk, Clamp Mount, AST-TC-S-DA
(1) Wiremold WSC320-S & clamp
Modifications are noted in CD Pkg.

Finish / Color: Wood Top Caps, Panel Fabric: Ritz, Classy PV-CL; Tackboard:
Shimmer, Glass WS-11; PVC Trim: Putty TR-AA; Painted Finish:
Gray Tone TR-G; Task Light: Silver

Dimensions: 7.5' x 6' (45 Sq. Ft.)

Weight:

Construction: Panel Supported Systems furniture

Installation: Panels, Gyp. Board.

Power: PDT to be Mounted at Worksurface Height

Position: Clerical

Notes:



Image shown may differ from actual product appearance depending on specified configuration.

GSA Furn.Code

Contract #

Expires:

Finish / Veneer: Wood Top Cap

Manufacturer: Haworth

Construction:

Content:

Backing:

Product: Heritage Cherry

Number:

Color: Heritage Cherry VC-W30

Width:

Repeat:

Weight:



Vendor is responsible for verifying product & item code; options, finishes, compatibility & quantities on specifications prior to placing orders, and re-verifying prior to installation.

Components and Panels

Item Code: G

Upholstery: Workstation Panel

Manufacturer: Haworth

Construction:

Content:

Backing:

Product: Surface Collection

Number: Ritz

Color: Classy PV-CL

Width:

Repeat:

Weight:



Finish / Veneer: Workstation P-Lam

Manufacturer: Haworth

Construction:

Content:

Backing:

Product: Surface Collection

Number: H-AA

Color: Putty

Width:

Repeat:

Weight:



Finish / Veneer: Workstation P-Lam - Vertical

Manufacturer: Haworth

Construction:

Content:

Backing:

Product: Surface Collection

Number: TR-AA

Color: Putty

Width:

Repeat:

Weight:



Upholstery: Workstation Tackboard

Manufacturer: Haworth

Construction:

Content:

Backing:

Product: Surface Collection

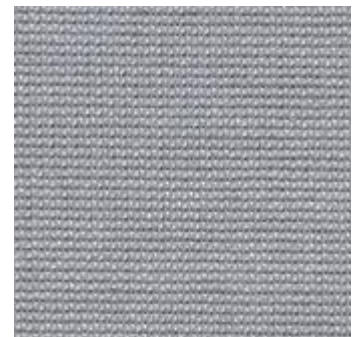
Number: Shimmer

Color: Glass WS-11

Width:

Repeat:

Weight:



Vendor is responsible for verifying product & item code; options, finishes, compatibility & quantities on specifications prior to placing orders, and re-verifying prior to installation.

C-185

Furniture Package

Specification - Items**Components and Panels**

Item Code: **G**

Location	Room #	Name	Quantity
	C185C	Office	1
		Total Quantity	<u>1</u>

Vendor is responsible for verifying product & item code; options, finishes, compatibility & quantities on specifications prior to placing orders, and re-verifying prior to installation.

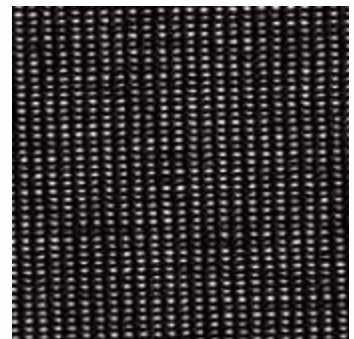
C-185

Furniture Package

Specification - Items**Seating**

Item Code: G-1131**Name:** Task Chair - F, G & H Stations**Manufacturer:** Haworth**Product Name:** Zody**Product Number:** #SZT-20-721 MA 1**Description:** Mid-back
Pneumatic Height Adjustment
Tilt Tension
Seat Pan Depth Adjustment
4 D Adjustable Arms
PAL Back System**Finish / Color:** Seat Upholstery: Momentum Group Row, Color: Fjord, Mesh Back:
Color #MA-001**Dimensions:** 29"w x 29"d x 38" - 43"h**Weight:****Construction:**

Image shown may differ from actual product appearance depending on specified configuration.

GSA Furn.Code**Contract #****Expires:****Notes:****Upholstery:** G-1131 Back**Manufacturer:** Haworth**Construction:****Content:****Backing:****Product:** Mesh**Number:** MA-1**Color:** Support MA-1**Width:****Repeat:****Weight:**

Vendor is responsible for verifying product & item code; options, finishes, compatibility & quantities on specifications prior to placing orders, and re-verifying prior to installation.

C-185

Furniture Package

Specification - Items**Seating**

Item Code: G-1131**Upholstery:** G-1131 Seat**Manufacturer:** Momentum Group**Construction:****Content:****Backing:****Product:** Row**Number:** Row**Color:** Fjord**Width:****Repeat:****Weight:**

Location	Room #	Name	Quantity
	C185A	Reception/Waiting	3
	C185C	Office	1
	C185D	Open Office	16
		Total Quantity	20

Vendor is responsible for verifying product & item code; options, finishes, compatibility & quantities on specifications prior to placing orders, and re-verifying prior to installation.

C-185

Furniture Package

Specification - Items**Seating**

Item Code: G-1134

Name: Task Chair - D & E Stations
Manufacturer: Haworth
Product Name: Zody
Product Number: SZT-20-721 MA 1
Description: Mid-Back
Pneumatic Height Adjustment
Tilt Tension
Seat Pan Depth Adjustment
4 D Adjustable Arms
PAL Back System

Finish / Color: Upholstery: Haworth Twist Color: Corkscrew #MM-CS, Mesh Back:
#MA-1 Support

Dimensions: 29"w x 29"d x 38" - 43"h

Weight:

Construction:



Image shown may differ from actual product appearance depending on specified configuration.

GSA Furn.Code

Contract #

Expires:

Notes:

Upholstery: G-1133 - Back

Manufacturer: Haworth

Construction:

Content:

Backing:

Product: Mesh

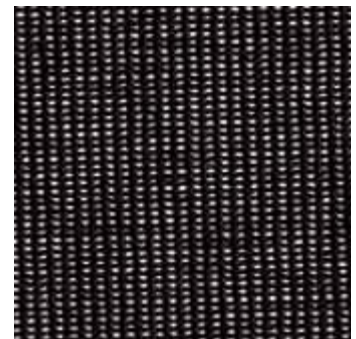
Number: MA-1

Color: MA-1

Width:

Repeat:

Weight:

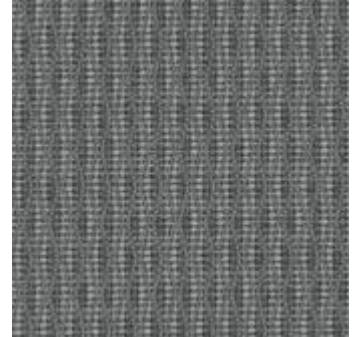


Vendor is responsible for verifying product & item code; options, finishes, compatibility & quantities on specifications prior to placing orders, and re-verifying prior to installation.

C-185

Furniture Package

Specification - Items**Seating**

Item Code: G-1134**Upholstery:** G-1134 Seat**Manufacturer:** Haworth**Construction:****Content:****Backing:****Product:** Twist**Number:** MM-CS**Color:** Corkscrew MM-CS**Width:****Repeat:****Weight:**

Location	Room #	Name	Quantity
	C185B	Office	1
		Total Quantity	1

Vendor is responsible for verifying product & item code; options, finishes, compatibility & quantities on specifications prior to placing orders, and re-verifying prior to installation.

C-185

Furniture Package

Specification - Items**Seating****Item Code:** G-1301

Name: Guest Chair - F & G Stations
Manufacturer: Haworth
Product Name: Zody
Product Number: SZG-22-1-S
Description: Sled Base
 Upholstered Seat and Back
 Arms w/ Cap
 2 Tone Upholstery
Finish / Color: Seat Upholstery: Haworth Dottie Color: Dew Drops ME-DD, Back Upholstery: Haworth Tellure Color: Slate 3A-38, Arm Cap: TR-F Black, Frame: TR-LE Metallic Silver
Dimensions: 21"w x 22"d x 32h
Weight:
Construction: Metal Frame



Image shown may differ from actual product appearance depending on specified configuration.

GSA Furn.Code**Contract #****Expires:****Notes:**

Upholstery:	G-1301 Seat & Back	Product:	Dottie
Manufacturer:	Haworth	Number:	ME-DD
Construction:		Color:	Dew Drops ME-DD
Content:		Width:	
Backing:		Repeat:	
		Weight:	



Location	Room #	Name	Quantity
	C185C	Office	1
Total Quantity			1

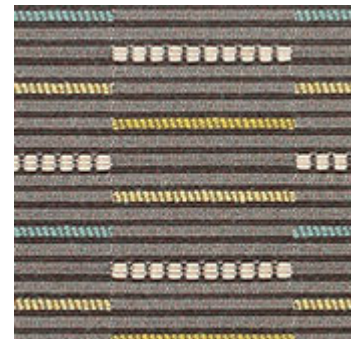
Vendor is responsible for verifying product & item code; options, finishes, compatibility & quantities on specifications prior to placing orders, and re-verifying prior to installation.

C-185

Furniture Package

Specification - Items**Seating****Item Code:** G-1302**Name:** Guest Chair - D & E Stations**Manufacturer:** Haworth**Product Name:** Composites**Product Number:** #4245-00**Description:** Wood Frame w/ Arc Arm Detail
Upholstered seat
Slat Back detail**Finish / Color:** Upholstery: Momentum Span Incase Color: Downtown, Wood
Finish Heritage Cherry VC-W30**Dimensions:** 22"w x 23"d x 33.75"h**Weight:****Construction:** FSC Wood

Image shown may differ from actual product appearance depending on specified configuration.

GSA Furn.Code**Contract #****Expires:****Notes:****Upholstery:** G-1302 Seat**Manufacturer:** Momentum Group**Construction:****Content:****Backing:****Product:** Span Incase**Number:** Span Incase**Color:** Downtown**Width:****Repeat:****Weight:**

Location	Room #	Name	Quantity
	C185B	Office	1
		Total Quantity	1

Vendor is responsible for verifying product & item code; options, finishes, compatibility & quantities on specifications prior to placing orders, and re-verifying prior to installation.

Seating

Item Code: G-1311

Name: Guest Chair - Reception
Manufacturer: Haworth
Product Name: Composites
Product Number: #4045-00
Description: Wood Frame w/ Arc Arm Detail
 Upholstered seat and back
 2 Tone Upholstery



Finish / Color: Seat Upholstery: Momentum Silica, Color: Haze, Back Upholstery: Momentum Amuse Color: Alloy, Wood Frame: Heritage Cherry VC-W30

Dimensions: 22.5"w x 23"d x 33.75"h

Weight:

Construction: FSC Wood

Image shown may differ from actual product appearance depending on specified configuration.

GSA Furn.Code

Contract #

Expires:

Notes:

Upholstery: G-1311 Back
Manufacturer: Momentum Group
Construction:
Content:
Backing:

Product: Amuse
Number:
Color: Alloy
Width:
Repeat:
Weight:



Upholstery: G-1311 Seat
Manufacturer: Momentum Group
Construction:
Content:
Backing:

Product: Silica
Number: Silica
Color: Haze
Width:
Repeat:
Weight:



Vendor is responsible for verifying product & item code; options, finishes, compatibility & quantities on specifications prior to placing orders, and re-verifying prior to installation.

C-185

Furniture Package

Specification - Items**Seating**

Item Code: G-1311

Location	Room #	Name	Quantity
	C185A	Reception/Waiting	8
		Total Quantity	<u>8</u>

Vendor is responsible for verifying product & item code; options, finishes, compatibility & quantities on specifications prior to placing orders, and re-verifying prior to installation.

Components and Panels

Item Code: H

Name: Workstation - H
Manufacturer: Haworth
Product Name: Places
Product Number: See Drawings
Description: To Include:
 Optional Workrite Advantage Dual System 2112-22 Preconfigured
 Keyboard tray w/ Memory Foam Palm Support
 Qty. 1 - Astra LED Desk, Clamp Mount, AST-TC-S-DA
 (1) Wiremold WSC320-S & clamp
 Modifications are noted in CD Pkg.
Finish / Color: Wood Top Caps, Panel Fabric: Ritz, Classy PV-CL; Tackboard:
 Shimmer, Glass WS-11; PVC Trim: Putty TR-AA; Painted Finish:
 Gray Tone TR-G; Task Light: Silver
Dimensions: 6' x 5' (30 Sq. Ft.)
Weight:
Construction: Panel Supported Systems furniture
Installation Panels, Gyp. Board.
Power PDT to be Mounted at Worksurface Height
Position Intern / Contractor
Notes:



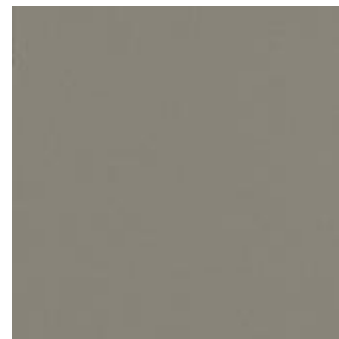
Image shown may differ from
 actual product appearance
 depending on specified
 configuration.

GSA Furn.Code

Contract #

Expires:

Finish / Veneer:	Workstation - Trim / Paint	Product:	Surface Collection
Manufacturer:	Haworth	Number:	TR-G
Construction:		Color:	Gray Tone
Content:		Width:	
Backing:		Repeat:	
		Weight:	



Vendor is responsible for verifying product & item code; options, finishes, compatibility & quantities on specifications prior to placing orders, and re-verifying prior to installation.

Components and Panels

Item Code: H

Upholstery: Workstation Panel

Manufacturer: Haworth

Construction:

Content:

Backing:

Product: Surface Collection

Number: Ritz

Color: Classy PV-CL

Width:

Repeat:

Weight:



Finish / Veneer: Workstation P-Lam

Manufacturer: Haworth

Construction:

Content:

Backing:

Product: Surface Collection

Number: H-AA

Color: Putty

Width:

Repeat:

Weight:



Upholstery: Workstation Tackboard

Manufacturer: Haworth

Construction:

Content:

Backing:

Product: Surface Collection

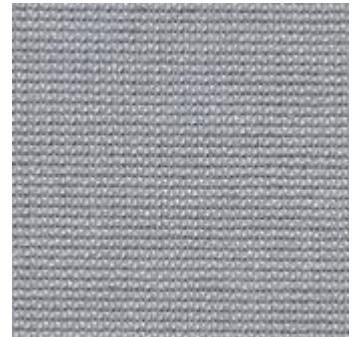
Number: Shimmer

Color: Glass WS-11

Width:

Repeat:

Weight:



Finish / Veneer: Workstation Wood Top Cap

Manufacturer: Haworth

Construction:

Content:

Backing:

Product: Heritage Cherry Satin

Number: Top Cap

Color: Heritage Cherry

Width:

Repeat:

Weight:



Vendor is responsible for verifying product & item code; options, finishes, compatibility & quantities on specifications prior to placing orders, and re-verifying prior to installation.

C-185

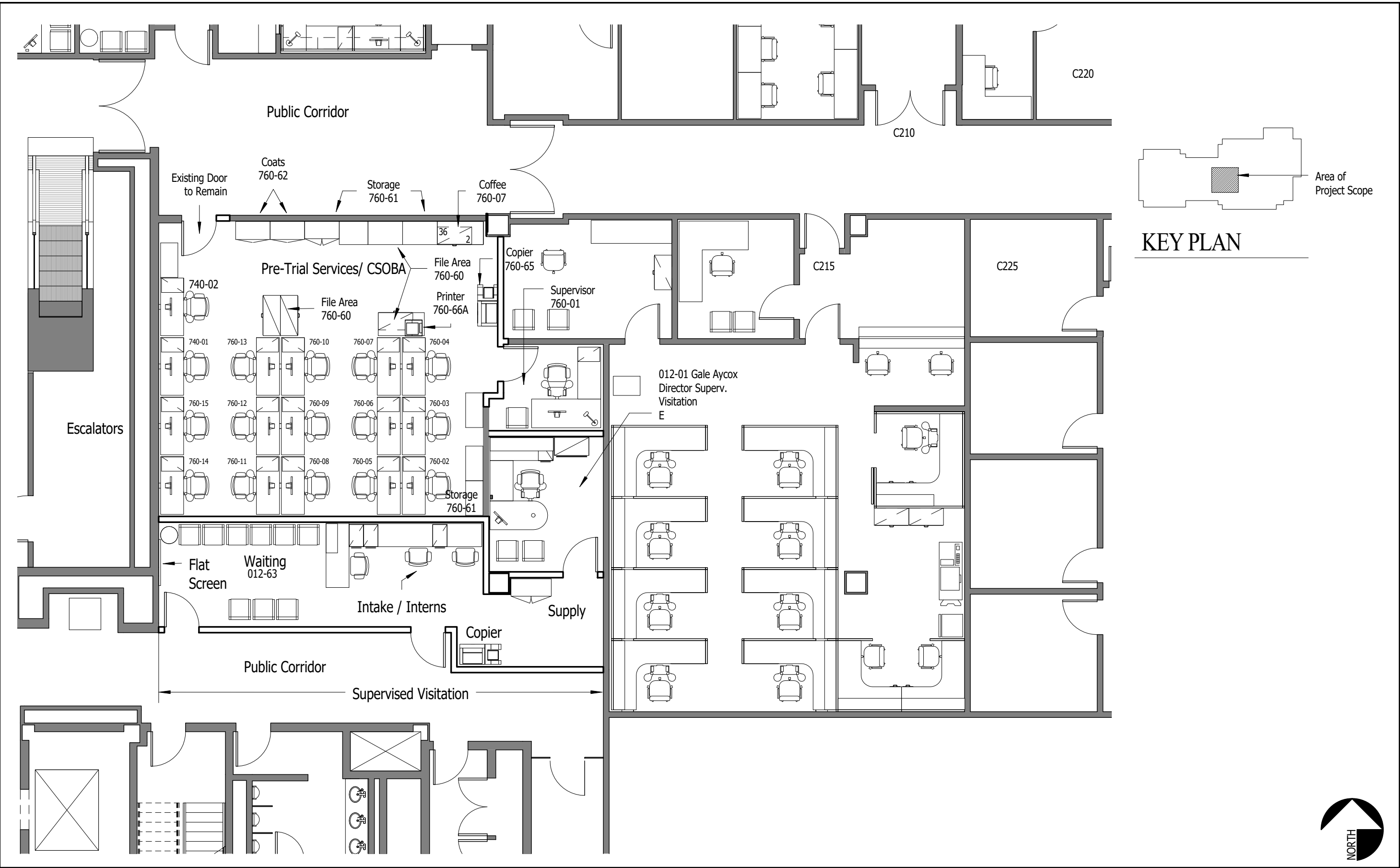
Furniture Package

Specification - Items**Components and Panels**

Item Code: H

Location	Room #	Name	Quantity
	C185A	Reception/Waiting	3
	C185D	Open Office	16
		Total Quantity	19

Vendor is responsible for verifying product & item code; options, finishes, compatibility & quantities on specifications prior to placing orders, and re-verifying prior to installation.



SKETCH SHEET

District of Columbia Courts
Moultrie Courthouse C St. Level - Suite C185
Pretrail Services and Supervised Visitation

Date: 06/10/19
Rev. No.:
Rev. Date:
Scale: As indicated
Sheet No.:

SK02

Project No.:
XX.XXXX.XX