

**Suite 4475****Room Detail**

Furniture Package

<b>Room Number:</b> 4475		<b>Set Code:</b> unique	<b>Department:</b>	
<b>Room Name:</b> Open Office		<b>Room Type:</b>	<b>Building:</b>	
		<b>Cing. Ht.:</b>	<b>Location:</b>	
		<b>Dims:</b>	<b>Phase:</b>	
<b>Contents:</b>		<b>Manufacturer</b>	<b>Product</b>	<b>Quantity</b>
<b>Accessories</b>				
A-801	Recycling Center - Chambers	Peter Pepper Products, Inc.	Temptation Series	1
<b>Files &amp; Shelving</b>				
C-700	Storage Cabinet - 30"w Freestanding	Haworth	Masters Series	1
F-5-36	Lateral File - 5 Drawer, 36"w	Haworth	X - Series	1
<b>Components and Panels</b>				
F	Workstation - F	Haworth	Places	1
G	Workstation - G	Haworth	Places	3
<b>Seating</b>				
G-1131	Task Chair - F, G & H Stations	Haworth	Zody	4
G-1301	Guest Chair - F & G Stations	Haworth	Zody	1
G-1312	Guest Chair - Reception	Haworth	Zody	11
<b>Room Total</b>				23

Vendor is responsible for verifying product & item code; options, finishes, compatibility & quantities on specifications prior to placing orders, and re-verifying prior to installation.

## Accessories

Item Code: A-801

**Name:** Recycling Center - Chambers  
**Manufacturer:** Peter Pepper Products, Inc.  
**Product Name:** Temptation Series  
**Product Number:** Model 1031  
**Description:** 9" Round Opening  
 Include 1 Fiberglass Liner  
 Include Recycling Logo Decal in Black  
  
**Finish / Color:** Soft White  
**Dimensions:** 16"w x 16"d x 28"h  
**Weight:** 33 lbs.  
**Construction:** Fiber Glass

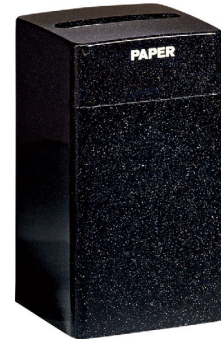


Image shown may differ from actual product appearance depending on specified configuration.

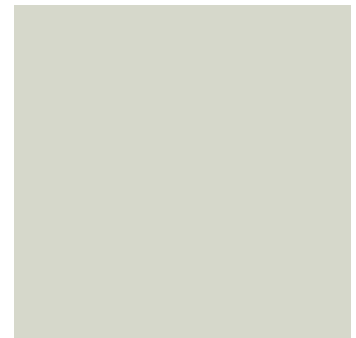
GSA Furn.Code

Contract #

Expires:

## Notes:

<b>Finish / Veneer:</b> Fiber Glass - White	<b>Product:</b> Soft White
<b>Manufacturer:</b> Peter Pepper Products, Inc.	<b>Number:</b>
<b>Construction:</b>	<b>Color:</b> Soft White
<b>Content:</b>	<b>Width:</b>
<b>Backing:</b>	<b>Repeat:</b>
	<b>Weight:</b>



Location	Room #	Name	Quantity
	4475	Open Office	1
		<b>Total Quantity</b>	<b>1</b>

Vendor is responsible for verifying product & item code; options, finishes, compatibility & quantities on specifications prior to placing orders, and re-verifying prior to installation.

## Files &amp; Shelving

Item Code: C-700

**Name:** Storage Cabinet - 30"w Freestanding  
**Manufacturer:** Haworth  
**Product Name:** Masters Series  
**Product Number:** X4H3-1930-8SSLW  
**Description:** Three High Cabinet with Hinged Doors  
 Doors have concealed hinges  
 1 adjustable shelf w/ 1.25" adjustment range  
 1 fixed shelf  
 Black Lock Plug, keyed individually  
 on adjustable glides w/ 2" range  
**Finish / Color:** Heritage Cherry VC-W30  
**Dimensions:** 30"w x 19"d x 41"h  
**Weight:**  
**Construction:** FSC Certified Wood

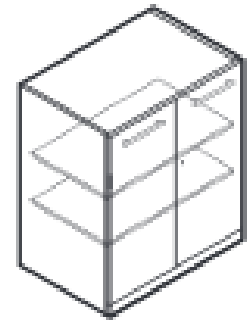


Image shown may differ from actual product appearance depending on specified configuration.

GSA Furn.Code

Contract #

Expires:

## Notes:

**Finish / Veneer:** Workstation Wood**Manufacturer:** Haworth**Construction:****Content:****Backing:****Product:** Heritage Cherry Satin**Number:** VC-W30**Color:** Heritage Cherry**Width:****Repeat:****Weight:**

Location	Room #	Name	Quantity
	4475	Open Office	1
		<b>Total Quantity</b>	<b>1</b>

Vendor is responsible for verifying product & item code; options, finishes, compatibility & quantities on specifications prior to placing orders, and re-verifying prior to installation.

## Components and Panels

---

**Item Code:** F

**Name:** Workstation - F  
**Manufacturer:** Haworth  
**Product Name:** Places  
**Product Number:** See Contract Drawings for Enlarged Plans & Details  
**Description:** To Include:  
 Optional Workrite Advantage Dual System 2112-22 Preconfigured  
 Keyboard tray w/ Memory Foam Palm Support  
 Qty. 1 - Astra LED Desk, Clamp Mount, AST-TC-S-DA  
 (1) Wiremold WSC320-S & clamp  
 Modifications are noted in CD Pkg.  
**Finish / Color:** Wood Top Caps, Panel Fabric: Ritz, Classy PV-CL; Tackboard:  
 Shimmer, Glass WS-11; PVC Trim: Putty TR-AA; Painted Finish:  
 Gray Tone TR-G; Task Light: Silver  
**Dimensions:** 7.5' x 8' (60 Sq. Ft.)  
**Weight:**  
**Construction:** Panel Supported Systems furniture  
**Installation:** Panels, Demountables, Gyp. Board.  
**Position:** Non-Supervisory Professional; Grade 9-11  
**Notes:**



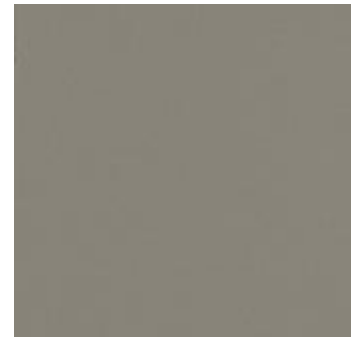
Image shown may differ from actual product appearance depending on specified configuration.

**GSA Furn.Code**

**Contract #**

**Expires:**

<b>Finish / Veneer:</b>	<b>Workstation - Trim / Paint</b>	<b>Product:</b>	Surface Collection
<b>Manufacturer:</b>	Haworth	<b>Number:</b>	TR-G
<b>Construction:</b>		<b>Color:</b>	Gray Tone
<b>Content:</b>		<b>Width:</b>	
<b>Backing:</b>		<b>Repeat:</b>	
		<b>Weight:</b>	



Vendor is responsible for verifying product & item code; options, finishes, compatibility & quantities on specifications prior to placing orders, and re-verifying prior to installation.

## Components and Panels

---

**Item Code:** F

**Upholstery:** Workstation Panel

**Manufacturer:** Haworth

**Construction:**

**Content:**

**Backing:**

**Product:** Surface Collection

**Number:** Ritz

**Color:** Classy PV-CL

**Width:**

**Repeat:**

**Weight:**



**Finish / Veneer:** Workstation P-Lam

**Manufacturer:** Haworth

**Construction:**

**Content:**

**Backing:**

**Product:** Surface Collection

**Number:** H-AA

**Color:** Putty

**Width:**

**Repeat:**

**Weight:**



**Finish / Veneer:** Workstation P-Lam - Vertical

**Manufacturer:** Haworth

**Construction:**

**Content:**

**Backing:**

**Product:** Surface Collection

**Number:** TR-AA

**Color:** Putty

**Width:**

**Repeat:**

**Weight:**



**Upholstery:** Workstation Tackboard

**Manufacturer:** Haworth

**Construction:**

**Content:**

**Backing:**

**Product:** Surface Collection

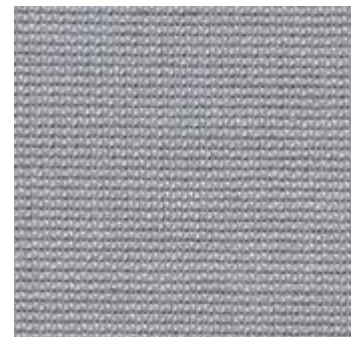
**Number:** Shimmer

**Color:** Glass WS-11

**Width:**

**Repeat:**

**Weight:**



Vendor is responsible for verifying product & item code; options, finishes, compatibility & quantities on specifications prior to placing orders, and re-verifying prior to installation.

**Suite 4475**

Furniture Package

**Specification - Items****Components and Panels**

---

**Item Code:** F

---

---

<b>Location</b>	<b>Room #</b>	<b>Name</b>	<b>Quantity</b>
	4475	Open Office	1
		<b>Total Quantity</b>	<u>1</u>

---

Vendor is responsible for verifying product & item code; options, finishes, compatibility & quantities on specifications prior to placing orders, and re-verifying prior to installation.

## Suite 4475

Furniture Package

## Specification - Items

### Files & Shelving

---

**Item Code:** F-5-36

---

**Name:** Lateral File - 5 Drawer, 36"w  
**Manufacturer:** Haworth  
**Product Name:** X - Series  
**Product Number:** JLRD-0536-S  
**Description:** X - Series Lateral File  
5 Drawer  
Integral Pull



**Finish / Color:** Grey Tone TR-G  
**Dimensions:** 36"w x 18"d x 63.5"h  
**Weight:**  
**Construction:** Metal

Image shown may differ from actual product appearance depending on specified configuration.

**GSA Furn.Code**

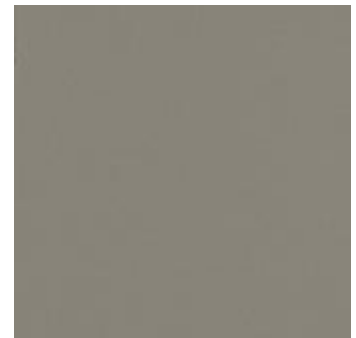
**Contract #**

**Expires:**

**Notes:**

**Finish / Veneer:** Workstation - Trim / Paint  
**Manufacturer:** Haworth  
**Construction:**  
**Content:**  
**Backing:**

**Product:** Surface Collection  
**Number:** TR-G  
**Color:** Gray Tone  
**Width:**  
**Repeat:**  
**Weight:**



---

Location	Room #	Name	Quantity
	4475	Open Office	1
		<b>Total Quantity</b>	1

---

Vendor is responsible for verifying product & item code; options, finishes, compatibility & quantities on specifications prior to placing orders, and re-verifying prior to installation.

## Components and Panels

---

**Item Code:** G

**Name:** Workstation - G  
**Manufacturer:** Haworth  
**Product Name:** Places  
**Product Number:** See Contract Drawings for Enlarged Plans & Details  
**Description:** To Include:  
 Optional Workrite Advantage Dual System 2112-22 Preconfigured  
 Keyboard tray w/ Memory Foam Palm Support  
 Qty. 1 - Astra LED Desk, Clamp Mount, AST-TC-S-DA  
 (1) Wiremold WSC320-S & clamp  
 Modifications are noted in CD Pkg.  
**Finish / Color:** Wood Top Caps, Panel Fabric: Ritz, Classy PV-CL; Tackboard:  
 Shimmer, Glass WS-11; PVC Trim: Putty TR-AA; Painted Finish:  
 Gray Tone TR-G; Task Light: Silver  
**Dimensions:** 7.5' x 6' (45 Sq. Ft.)  
**Weight:**  
**Construction:** Panel Supported Systems furniture  
**Installation** Panels, Gyp. Board.  
**Power** PDT to be Mounted at Worksurface Height  
**Position** Clerical  
**Notes:**



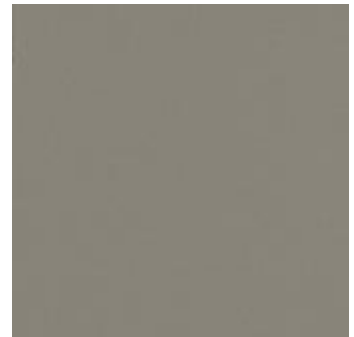
Image shown may differ from actual product appearance depending on specified configuration.

**GSA Furn.Code**

**Contract #**

**Expires:**

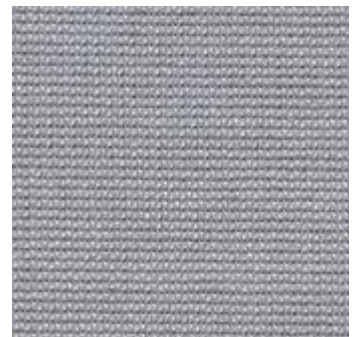
<b>Finish / Veneer:</b>	<b>Workstation - Trim / Paint</b>	<b>Product:</b>	Surface Collection
<b>Manufacturer:</b>	Haworth	<b>Number:</b>	TR-G
<b>Construction:</b>		<b>Color:</b>	Gray Tone
<b>Content:</b>		<b>Width:</b>	
<b>Backing:</b>		<b>Repeat:</b>	
		<b>Weight:</b>	



Vendor is responsible for verifying product & item code; options, finishes, compatibility & quantities on specifications prior to placing orders, and re-verifying prior to installation.

**Components and Panels**

---

**Item Code:** G**Upholstery:** Workstation Panel**Manufacturer:** Haworth**Construction:****Content:****Backing:****Product:** Surface Collection**Number:** Ritz**Color:** Classy PV-CL**Width:****Repeat:****Weight:****Finish / Veneer:** Workstation P-Lam**Manufacturer:** Haworth**Construction:****Content:****Backing:****Product:** Surface Collection**Number:** H-AA**Color:** Putty**Width:****Repeat:****Weight:****Finish / Veneer:** Workstation P-Lam - Vertical**Manufacturer:** Haworth**Construction:****Content:****Backing:****Product:** Surface Collection**Number:** TR-AA**Color:** Putty**Width:****Repeat:****Weight:****Upholstery:** Workstation Tackboard**Manufacturer:** Haworth**Construction:****Content:****Backing:****Product:** Surface Collection**Number:** Shimmer**Color:** Glass WS-11**Width:****Repeat:****Weight:**

Vendor is responsible for verifying product & item code; options, finishes, compatibility & quantities on specifications prior to placing orders, and re-verifying prior to installation.

**Suite 4475**

Furniture Package

**Specification - Items****Components and Panels**

---

**Item Code:** G

---

---

<b>Location</b>	<b>Room #</b>	<b>Name</b>	<b>Quantity</b>
	4475	Open Office	3
		<b>Total Quantity</b>	<u>3</u>

---

Vendor is responsible for verifying product & item code; options, finishes, compatibility & quantities on specifications prior to placing orders, and re-verifying prior to installation.

## Seating

---

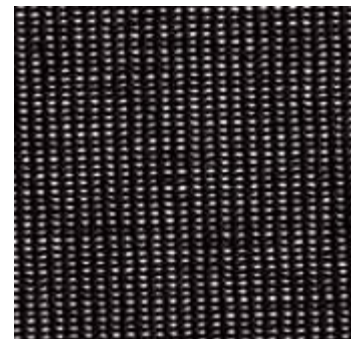
**Item Code:** G-1131
**Name:** Task Chair - F, G & H Stations**Manufacturer:** Haworth**Product Name:** Zody**Product Number:** SZT-20-721 MA 1

**Description:** Mid-Back  
Pneumatic Height Adjustment  
Tilt Tension  
Seat Pan Depth Adjustment  
4 D Adjustable Arms  
PAL Back System

**Finish / Color:** Upholstery: Momentum Group: Row Color: Fjord, Mesh Back: #MA-1 Support

**Dimensions:** 29"w x 29"d x 38" - 43"h**Weight:****Construction:**

Image shown may differ from actual product appearance depending on specified configuration.

**GSA Furn.Code****Contract #****Expires:****Notes:****Upholstery:** G-1131 Back**Manufacturer:** Haworth**Construction:****Content:****Backing:****Product:** Mesh**Number:** MA-1**Color:** Support MA-1**Width:****Repeat:****Weight:**


---

Vendor is responsible for verifying product & item code; options, finishes, compatibility & quantities on specifications prior to placing orders, and re-verifying prior to installation.

## Suite 4475

Furniture Package

## Specification - Items

### Seating

---

**Item Code:** G-1131

---

**Upholstery:** G-1131 Seat

**Manufacturer:** Momentum Group

**Construction:**

**Content:**

**Backing:**

**Product:** Row

**Number:** Row

**Color:** Fjord

**Width:**

**Repeat:**

**Weight:**



---

Location	Room #	Name	Quantity
	4475	Open Office	4
		<b>Total Quantity</b>	4

---

Vendor is responsible for verifying product & item code; options, finishes, compatibility & quantities on specifications prior to placing orders, and re-verifying prior to installation.

## Seating

**Item Code:** G-1301

**Name:** Guest Chair - F & G Stations

**Manufacturer:** Haworth

**Product Name:** Zody

**Product Number:** SZG-22-1-S

**Description:** Sled Base  
Upholstered Seat and Back  
Arms w/ Cap

**Finish / Color:** Upholstery: Haworth Dottie, Color: Dew Drops ME-DD, Arm Cap: TR-F Black, Frame: TR-LE Metallic Silver

**Dimensions:** 21"w x 22"d x 32"h

**Weight:**

**Construction:** Metal frame



Image shown may differ from actual product appearance depending on specified configuration.

**GSA Furn.Code**

**Contract #**

**Expires:**

**Notes:**

**Upholstery:** G-1301 Seat & Back

**Manufacturer:** Haworth

**Construction:**

**Content:**

**Backing:**

**Product:** Dottie

**Number:** ME-DD

**Color:** Dew Drops ME-DD

**Width:**

**Repeat:**

**Weight:**



Location	Room #	Name	Quantity
	4475	Open Office	1
		<b>Total Quantity</b>	<b>1</b>

Vendor is responsible for verifying product & item code; options, finishes, compatibility & quantities on specifications prior to placing orders, and re-verifying prior to installation.

**Suite 4475**

Furniture Package

**Specification - Items****Seating****Item Code:** G-1312

**Name:** Guest Chair - Reception  
**Manufacturer:** Haworth  
**Product Name:** Zody  
**Product Number:** SZG-22-1-S  
**Description:** Sled Base  
 Upholstered Seat and Back  
 Arms w/ Cap



**Finish / Color:** Upholstery: Momentum Silica, Color: Skyward, Arm Cap: TR-F  
 Black, Frame: TR-LE Metallic Silver

**Dimensions:** 21"w x 22"d x 32"h

**Weight:**

**Construction:** Metal frame

Image shown may differ from  
 actual product appearance  
 depending on specified  
 configuration.

**GSA Furn.Code**

**Contract #**

**Expires:**

**Notes:**

**Upholstery:** G-1301 Seat & Back

**Manufacturer:** Haworth

**Construction:**

**Content:**

**Backing:**

**Product:** Dottie

**Number:** ME-DD

**Color:** Dew Drops ME-DD

**Width:**

**Repeat:**

**Weight:**



Location	Room #	Name	Quantity
	4475	Open Office	11
		<b>Total Quantity</b>	11

Vendor is responsible for verifying product & item code; options, finishes, compatibility & quantities on specifications prior to placing orders, and re-verifying prior to installation.